
Glutamine Synthetase (Clone GS-6)

Mouse Monoclonal Antibody

Specificity: Human. Others-not known

Immunogen: Glutamine synthetase purified from sheep brain.

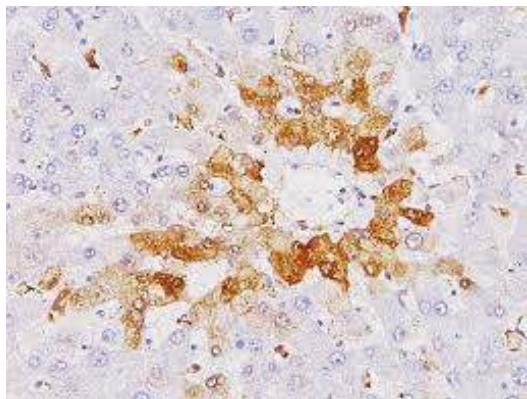
Ig Class: IgG2a

Storage: Store vial at 4°C. When stored at 2-8°C, this antibody is stable for 24 months.

Staining procedures: Use formalin-fixed and paraffin-embedded sections. *Retrieval conditions:* Pretreatment of tissue with proteolytic enzymes should be performed prior to staining. *Detection methods:* Polymer anti-mouse/rabbit Ig detection system. *Working dilution:* 1:50-100; *Positive Control:* Normal liver. *Cellular Localization:* Cytoplasmic. *Intended Use:* In vitro diagnosis (IVD).

Description: Glutamine synthetase, an enzyme that catalyzes the amination of glutamic acid to form glutamine, is found in mammals as an octamer of eight identical 45 kDa subunits. Glutamine synthetase activity has been shown to be a useful marker of astrocytes and an important differentiation feature in retina. Glutamine synthetase is also present in hepatocytes near the hepatic central veins. In liver focal nodular hyperplasia (FNH), the glutamine synthetase immunohistochemical staining pattern appears map-like, which is useful in differentiating FNH from normal liver tissue or other hepatic mass lesions.

Supplied As: Tissue culture supernatant in 0.2% BSA and 15mM sodium azide.



Formalin-fixed, paraffin-embedded human liver stained with anti-glutamine synthetase antibody using peroxidase-conjugate and DAB chromogen. Note the cytoplasmic staining of hepatocytes around a central vein

Cat. #Z2274 (1.0 ml)

ZETA Corporation
65 N 1st Ave, Ste 202C
Arcadia, CA 91006, USA
Tel: (626) 355-2053
<http://www.zeta-corp.com>



Zeta Corporation



Emergo Europe B.V.
Prinsessegracht 20
2514 AP The Hague
The Netherlands
Tel: +31 70 345 8570