

Glucagon (Clone EP74)

Rabbit Monoclonal Antibody

Specificity: Human. Others not tested

Immunogen: Synthetic peptide (the amino acid sequence is considered to be commercially sensitive)

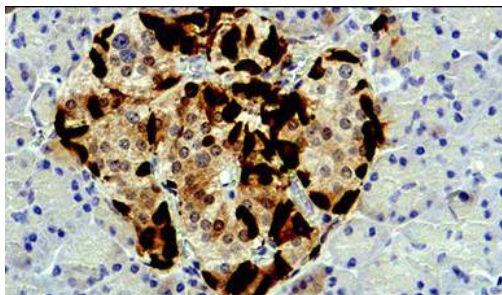
Ig Class: Rabbit IgG

Storage: Store vial at 4°C. When stored at 2-8°C, this antibody is stable for 24 months

Staining procedures: Use formalin-fixed and paraffin-embedded sections. *Retrieval conditions:* Pretreatment of deparaffinized tissue with heat-induced epitope retrieval is recommended. *Detection methods:* Polymer anti-mouse/rabbit Ig detection system. *Working dilution:* 1:50-100; *Positive Control:* Normal pancreas. *Cellular Localization:* Cytoplasmic. *Intended Use:* In vitro diagnosis (IVD).

Description: Glucagon is synthesized and released by the alpha-cells of the islets of Langerhans in pancreas. It regulates blood glucose by increasing gluconeogenesis and decreasing glycolysis, stimulates fluid secretions from the intestine and suppresses the release of gastrin. Anti-glucagon is useful in identification of glucagonoma.

Supplied As: Tissue culture supernatant with 0.2% BSA and 15mM sodium azide.



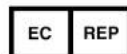
Formalin-fixed, paraffin-embedded human pancreas stained with anti-glucagon antibody using peroxidase-conjugate and DAB chromogen. Note the cytoplasmic staining of islet cells

Cat. #Z2299 (1.0 ml)

ZETA Corporation
65 N 1st Ave, Ste 202C
Arcadia, CA 91006, USA
Tel: (626) 355-2053
<http://www.zeta-corp.com>



Zeta Corporation



Emergo Europe B.V.
Prinsessegracht 20
2514 AP The Hague
The Netherlands
Tel: +31 70 345 8570