
Galectin-3 (Clone B2C10)

Mouse Monoclonal Antibody

Specificity: Human. Others not tested

Immunogen: Recombinant galectin-3 of human origin with an epitope mapping within the first 18 amino acids

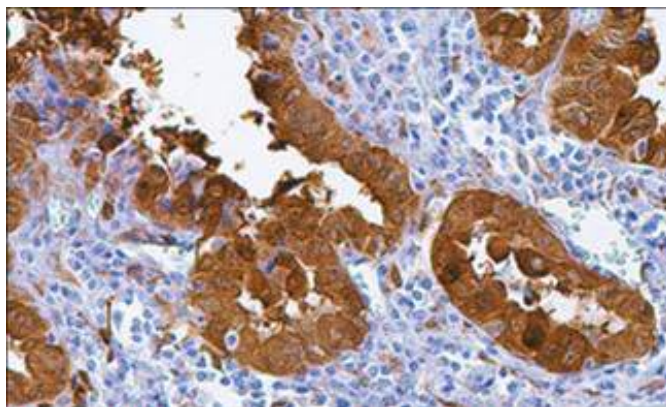
Ig Class: IgG1

Storage: Store vial at 4°C. When stored at 2-8°C, this antibody is stable for 24 months

Staining procedures: Use formalin-fixed and paraffin-embedded sections. *Retrieval conditions:* Pretreatment of deparaffinized tissue with heat-induced epitope retrieval is recommended. *Detection methods:* Polymer anti-mouse/rabbit Ig detection system. *Working dilution:* 1:50. *Positive Control:* Papillary or follicular thyroid carcinoma. *Cellular Localization:* Cytoplasmic. *Intended Use:* In vitro Diagnosis (IVD).

Description: Galectin-3 is a 31 kD beta-galactosidase binding lectin. It has been associated with binding to the basement membrane glycoprotein laminin. Anti-Galectin-3 has been demonstrated to be valuable in differentiating between benign and malignant thyroid neoplasms in both histologic sections and fine needle aspiration biopsy material. Anti-Galectin-3 antibody has also been useful in identifying anaplastic large cell lymphoma.

Supplied As: Tissue culture supernatant with 0.2% BSA and 15mM sodium azide,



Formalin-fixed, paraffin-embedded human thyroid papillary carcinoma (follicular variant) stained with anti-galectin-3 antibody using peroxidase-conjugate and DAB chromogen. Note the cytoplasmic staining of tumor cells

Cat. #Z2316 (1.0 ml)

ZETA Corporation
65 N 1st Ave, Ste 202C
Arcadia, CA 91006, USA
Tel: (626) 355-2053
<http://www.zeta-corp.com>



Zeta Corporation



Emergo Europe B.V.
Prinsessegracht 20
2514 AP The Hague
The Netherlands
Tel: +31 70 345 8570