

## Galectin-1 / Human Placental Lactogen (Clone ZM188) Mouse Monoclonal Antibody

**Specificity:** Human. Others not tested

**Immunogen:** Recombinant human Galectin-1 protein fragment (aa12-108)

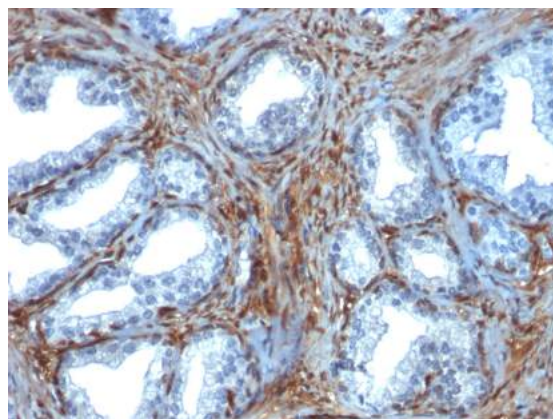
**Ig Class:** IgG1/ $\kappa$

**Storage:** Store vial at 4°C. When stored at 2-8°C, this antibody is stable for 24 months

**Staining procedures:** Use formalin-fixed and paraffin-embedded sections. *Retrieval conditions:* Pretreatment of deparaffinized tissue with heat-induced epitope retrieval is recommended. *Detection methods:* Polymer anti-mouse/rabbit Ig detection system. *Working dilution:* 1:100-200. *Positive Control:* Normal prostate. *Cellular Localization:* Cytoplasmic. *Intended Use:* In Vitro Diagnosis (IVD).

**Description:** Galectin-1 is a member of the beta-galactoside-binding family and is a dimeric protein of 14kD participating in a variety of normal and pathological processes, including cancer progression. Galectin-1 can affect the proliferation of normal and malignant cells. Inhibition of cell growth is observed in a lactose-dependent manner as lower concentrations of the lectin stimulate cell proliferation. Galectin-1 may also be implicated in the induction of apoptosis of activated T cells through the binding of exogenous galectin-1 to CD45 molecules present on the surface of lymphocytes. Galectin-1, reported to be present either at the surface of cancer cells or accumulated around these cells could act as an immunological shield to protect against a T cell immune response and provide an advantage for survival.

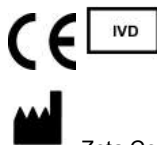
**Supplied As:** Tissue culture supernatant with 0.2% BSA and 15mM sodium azide,



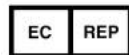
*Formalin-fixed, paraffin-embedded human prostate stained with anti-galectin-3 antibody using peroxidase-conjugate and DAB chromogen. Note the cytoplasmic staining of stromal cells*

**Cat. #Z2501 (1.0 ml)**

**ZETA** Corporation  
65 N 1<sup>st</sup> Ave, Ste 202C  
Arcadia, CA 91006, USA  
Tel: (626) 355-2053  
<http://www.zeta-corp.com>



Zeta Corporation



**Emergo Europe B.V.**  
Prinsessegracht 20  
2514 AP The Hague  
The Netherlands  
Tel: +31 70 345 8570