
GATA3 (Clone L50-823)

Mouse Monoclonal Antibody

Specificity: Human, rat. Others not known

Immunogen: Conserved peptide between the GATA trans-activation and DNA-binding domain

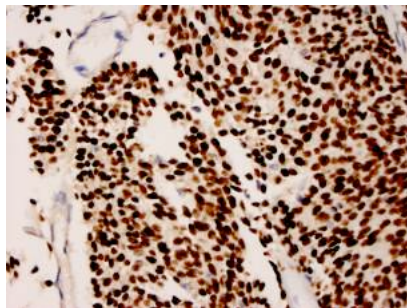
Ig Class: IgG1/κ

Storage: Store vial at 4°C. When stored at 2-8°C, this antibody is stable for 24 months

Staining procedures: Use formalin-fixed and paraffin-embedded sections. *Retrieval conditions:* Pretreatment of deparaffinized tissue with heat-induced epitope retrieval is recommended. *Detection methods:* Polymer anti-mouse/rabbit IgG detection system. *Working dilution:* 1:100; *Positive Control:* transitional cell carcinoma. *Cellular Localization:* nuclear. *Intended Use:* For In Vitro Diagnosis Use (IVD).

Description: GATA-3 (GATA binding protein 3) is a member of the GATA family of transcription factors. This 50 kD nuclear protein regulates the development and subsequent maintenance of a variety of human tissues, including hematopoietic cells, skin, kidney, mammary gland, and the central nervous system. Among several other roles, GATA-3 involved in luminal cell differentiation in the mammary gland and appears to control a set of genes involved in the differentiation and proliferation of breast cancer. The expression of GATA-3 is associated with the expression of estrogen receptor-alpha (ER) in breast cancer. GATA-3 has been shown to be a novel marker for bladder cancer. The study demonstrated that GATA-3 stained 67% of urothelial Carcinomas, but none of prostate or renal carcinomas.

Supplied As: Purified antibody in 0.2% BSA and 15mM sodium azide.



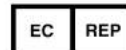
Formalin-fixed, paraffin-embedded human bladder transitional cell carcinoma in situ stained with anti-GATA3 antibody using peroxidase-conjugate and DAB chromogen. Note nuclear staining of tumor cells

Cat. #Z2227 (1.0 ml)

ZETA Corporation
65 N 1st Ave, Ste 202C
Arcadia, CA 91006, USA
Tel: (626) 355-2053
<http://www.zeta-corp.com>



Zeta Corporation



Emergo Europe B.V.
Prinsessegracht 20
2514 AP The Hague
The Netherlands
+31 70 345 8570