

---

## FoxP1 (Clone SP133) Rabbit Monoclonal Antibody

**Specificity:** Human. Others not known

**Immunogen:** Synthetic peptide corresponding to the C-terminus of human FOXP1 protein

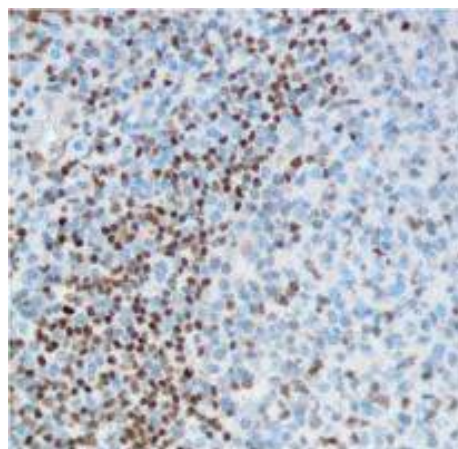
**Ig Class:** Rabbit IgG

**Storage:** Store vial at 4°C. When stored at 2-8°C, this antibody is stable for 24 months

**Staining procedures:** Use formalin-fixed and paraffin-embedded sections. *Retrieval conditions:* Pretreatment of deparaffinized tissue with heat-induced epitope retrieval is recommended. *Detection methods:* Polymer anti-mouse/rabbit Ig detection system. *Working dilution:* 1:50; *Positive Control:* Tonsil. *Cellular Localization:* Nuclear. *Intended Use:* In Vitro Diagnosis (IVD).

**Description:** Forkhead box protein P1 (FOXP1) is a transcriptional repressor that plays an important role in the development of the brain and lung in mammals. The gene encoding this protein may act as a tumor suppressor as it is lost in several tumor types and maps to a chromosomal region (3p14.1) reported to contain a tumor suppressor gene. It is essential transcriptional regulator of B cell development. PAX5/FOXP1 translocation t(9;3)(p13;p14.1) is found in acute lymphoblastic leukemia. FOXP1 is positive in subset of diffuse large B-cell lymphoma and mucosa-associated lymphoid tissue lymphomas.

**Supplied As:** Purified antibody in 0.2% BSA and 15mM sodium azide.



*Formalin-fixed, paraffin-embedded human tonsil stained with anti-FoxP1 antibody using peroxidase-conjugate and DAB chromogen. Note nuclear staining of normal B-cells*

**Cat. #Z2235 (1.0 ml)**

---

**ZETA** Corporation  
65 N 1<sup>st</sup> Ave, Ste 202C  
Arcadia, CA 91006, USA  
Tel: (626) 355-2053  
<http://www.zeta-corp.com>



Zeta Corporation



**Emergo Europe B.V.**  
Prinsessegracht 20  
2514 AP The Hague  
The Netherlands  
Tel: +31 70 345 8570