

---

## Fascin (Clone 55K-2) Mouse Monoclonal Antibody

**Specificity:** Human and rat. Others-not known

**Immunogen:** Fascin purified from HeLa cells

**Ig Class:** Mouse IgG1/ $\kappa$

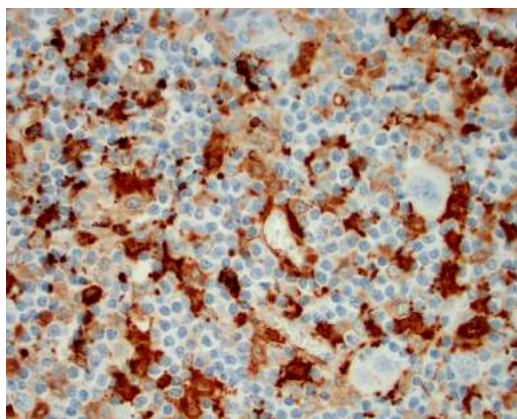
**Storage:** Store vial at 4°C. When stored at 2-8°C, this antibody is stable for 24 months

**Staining procedures:** Use formalin-fixed and paraffin-embedded sections. *Retrieval conditions:* Pretreatment of deparaffinized tissue with heat-induced epitope retrieval is recommended. *Detection methods:* Polymer anti-mouse/rabbit Ig detection system. *Working dilution:* 1:50-250; *Positive Control:* Hodgkin's lymphoma or spleen. *Cellular Localization:* Cytoplasmic. *Intended Use:* In vitro diagnosis (IVD).

**Description:** Human fascin is a highly conserved actin-bundling protein. Fascin, encoded by the human homolog for sn (hsn) gene, has been localized to microspikes and stress fibers of cultured cells where it is thought to be involved in the formation of microfilament bundles. It is expressed predominantly in dendritic cells. Lymphoid cells, myeloid cells and plasma cells are negative. However, Reed Sternberg cells in Hodgkin's lymphoma are positive for fascin staining. Epstein-Barr virus may induce expression of fascin in B cells.

**Comments:** Clone 55K-2 can be used as an effective marker for Reed Sternberg cells.

**Supplied As:** Tissue culture supernant with 0.2% BSA and 15mM sodium azide.



*Formalin-fixed, paraffin-embedded human Hodgkin lymphoma stained with anti-fascin antibody using peroxidase-conjugate and DAB chromogen. Note the cytoplasmic staining of Hodgkin's cells*

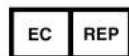
**Cat. #Z2079 (1.0 ml)**

---

**ZETA** Corporation  
65 N 1<sup>st</sup> Ave, Ste 202C  
Arcadia, CA 91006, USA  
Tel: (626) 355-2053  
<http://www.zeta-corp.com>



Zeta Corporation



**Emergo Europe B.V.**  
Prinsessegracht 20  
2514 AP The Hague  
The Netherlands  
Tel: +31 70 345 8570