
EMA (Clone E29) Mouse Monoclonal Antibody

Specificity: Human. Others-not known

Immunogen: Delipidated extract of human milk fat globule membranes

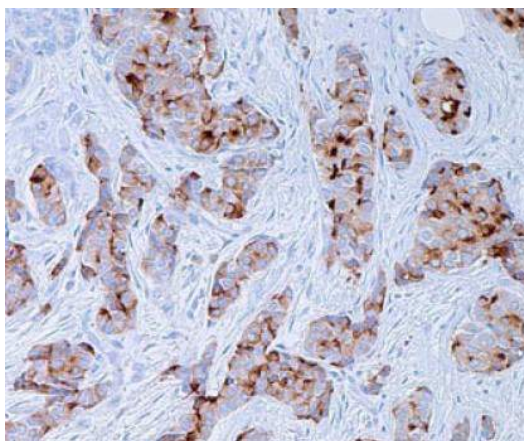
Ig Class: Mouse IgG2/κ

Storage: Store vial at 4°C. When stored at 2-8°C, this antibody is stable for 24 months

Staining procedures: Use formalin-fixed and paraffin-embedded sections. *Retrieval conditions:* Pretreatment of deparaffinized tissue with heat-induced epitope retrieval is recommended. *Detection methods:* Polymer anti-mouse/rabbit Ig detection system. *Working dilution:* 1:100-200; *Positive Control:* Breast or colon carcinoma. *Cellular Localization:* Cytoplasmic and cell membrane. *Intended Use:* In vitro diagnosis (IVD).

Description: Epithelial membrane antigen (EMA), or CA15-3, or polymorphic epithelial mucin (PEM), or sialomucin, or episialin is a mucin-like glycoprotein,. Antibody to EMA has been shown useful as a pan- epithelial marker for detecting early metastatic loci of carcinoma in the bone marrow or liver.

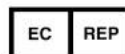
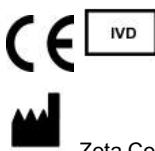
Supplied As: Purified antibody with 0.2% BSA and 15mM sodium azide.



Formalin-fixed, paraffin-embedded human breast cancer stained with anti-EMA antibody using peroxidase-conjugate and DAB chromogen. Note the membrane and cytoplasmic staining of tumor cells

Cat. #Z2048 (1.0 ml)

ZETA Corporation
65 N 1st Ave, Ste 202C
Arcadia, CA 91006, USA
Tel: (626) 355-2053
<http://www.zeta-corp.com>



Emergo Europe B.V.
Prinsessegracht 20
2514 AP The Hague
The Netherlands
Tel: +31 70 345 8570