

# EGFR (Clone EP22, as same as EP38Y) Rabbit Monoclonal Antibody

**Specificity:** Human. Does not react with mouse and rat. Others-not known

**Immunogen:** A synthetic phospho-peptide corresponding to residues surrounding Tyr1068 of human EGF receptor

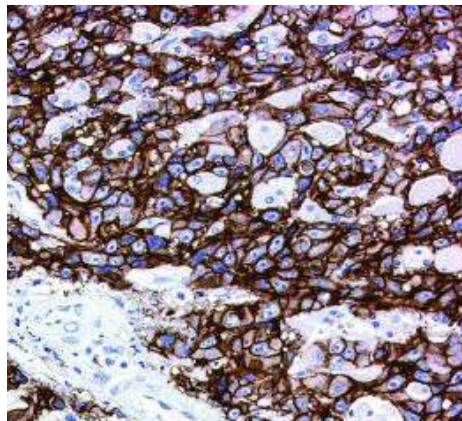
**Ig Class:** Rabbit IgG

**Storage:** Store vial at 4°C. When stored at 2-8°C, this antibody is stable for 24 months

**Staining procedures:** Use formalin-fixed and paraffin-embedded sections. *Retrieval conditions:* Pretreatment of tissue with proteolytic enzymes should be performed prior to staining. *Detection methods:* Polymer anti-mouse/rabbit Ig detection system. *Working dilution:* 1:50-100; *Positive Control:* Lung adenocarcinoma. *Cellular Localization:* Membranous. *Intended Use:* In vitro Diagnosis (IVD).

**Description:** EGFR is type I receptor tyrosine kinase with sequence homology to erbB-1, -2, -3 -4 or HER-1, -2, -3 -4. It binds to Epidermal Growth Factor (EGF), Transforming Growth Factor- $\alpha$  (TGF $\alpha$ ), Heparin-binding EGF (HB-EGF), amphiregulin, betacellulin and epiregulin. EGFR is overexpressed in tumors of breast, brain, bladder, lung, gastric, head & neck, esophagus, cervix, vulva, ovary, and endometrium. It is predominantly present in squamous cell carcinomas.

**Supplied As:** Tissue culture supernatant with 0.2% BSA and 15mM sodium azide.



*Formalin-fixed, paraffin-embedded human lung adenocarcinoma stained with anti-EGFR antibody using peroxidase-conjugate and DAB chromogen. Note the membrane staining of carcinoma cells*

**Cat. #Z2037 (1.0 ml)**