
EGFR (E746-A750del Specific) (Clone SP111) Rabbit Monoclonal Antibody

Specificity: Human. Others not tested

Immunogen: Synthetic EGFR peptide with deletion of E746-A750

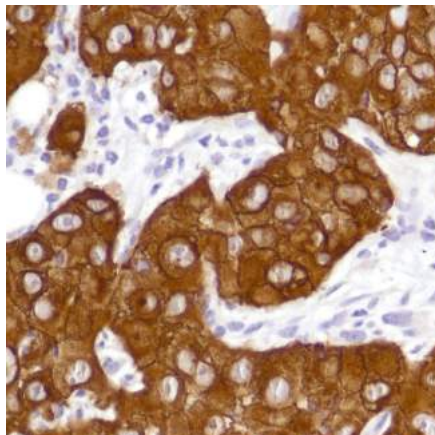
Ig Class: Rabbit IgG

Storage: Store vial at 4°C. When stored at 2-8°C, this antibody is stable for 24 months

Staining procedures: Use formalin-fixed and paraffin-embedded sections. *Retrieval conditions:* Pretreatment of deparaffinized tissue with heat-induced epitope retrieval is recommended. *Detection methods:* Polymer anti-mouse/rabbit Ig detection system. *Working dilution:* 1:50; *Positive Control:* Lung adenocarcinoma with EGFR E746-A750 deletion. *Cellular Localization:* Cytoplasmic and membrane. *Intended Use:* In vitro diagnosis (IVD).

Description: EGFR is a transmembrane tyrosine kinase that belongs to the HER/erbB protein family. Somatic mutations in the tyrosine kinase domain of EGFR are present in a subset of lung adenocarcinoma. Two types of mutations account for approximately 90% of mutant cases: a specific point mutation L858R which occurs in exon 21 and short in-frame deletions in exon 19. A common lesion in exon 19 is the deletion of E746-A750, although other variants can also occur.

Supplied As: Tissue culture supernatant with 0.2% BSA and 15mM sodium azide.



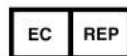
Formalin-fixed, paraffin-embedded lung adenocarcinoma with stained with anti-EGFR E746-A750del specific antibody using peroxidase-conjugate and DAB chromogen. Note cytoplasmic stain of tumor cells

Cat. #Z2288 (1.0 ml)

ZETA Corporation
65 N 1st Ave, Ste 202C
Arcadia, CA 91006, USA
Tel: (626) 355-2053
<http://www.zeta-corp.com>



Zeta Corporation



Emergo Europe B.V.
Prinsessegracht 20
2514 AP The Hague
The Netherlands
Tel: +31 70 345 8570