

## EBV-LMP (Clone CS1-4) Mouse Monoclonal Antibody

**Immunogen:** Recombinant fusion protein containing the sequence of bacterial beta-galactosidase and the carboxyl half of EBV-encoded LMP

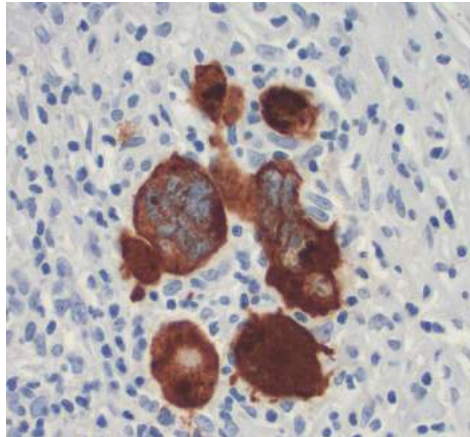
**Ig Class:** IgG1/ $\kappa$

**Storage:** Store vial at 4°C. When stored at 2-8°C, this antibody is stable for 24 months

**Staining procedures:** Use formalin-fixed and paraffin-embedded sections. *Retrieval conditions:* Pretreatment of deparaffinized tissue with heat-induced epitope retrieval is recommended. *Detection methods:* Polymer anti-mouse/rabbit IgG detection system. *Working dilution:* 1:100-200; *Positive Control:* EBV positive cells. *Cellular Localization:* Cytoplasmic. *Intended Use:* Analyte Specific Reagent (ASR).

**Description:** CS1-4 reacts strongly with EBV-positive lymphoblastoid cell lines and EBV infected B cell immunoblasts in infectious mononucleosis. It also reacts with 25 to 50 per cent of EBV-associated undifferentiated nasopharyngeal carcinomas and with Reed Sternberg cells in approximately 90% of EBV-associated Hodgkin's lymphoma cases. The cocktail recognizes distinct epitopes on the hydrophilic carboxyl region of LMP which is exposed to the cytosol.

**Supplied As:** Tissue culture supernatant with 0.2% BSA and 15mM sodium azide.



*Formalin Fixed, paraffin-embedded human Hodgkin's lymphoma stained with anti-EBV-LMP antibody using peroxidase-conjugate and DAB chromogen. Note intense cytoplasmic staining of Reed-Sternberg cells*

**Cat. #Z2094 (1.0 ml)**

