

---

## E-Cadherin (Clone EP6)

### Rabbit Monoclonal Antibody

**Specificity:** Human. Others-not known

**Immunogen:** A synthetic peptide corresponding to residues in the 5th cadherin domain of human E-cadherin

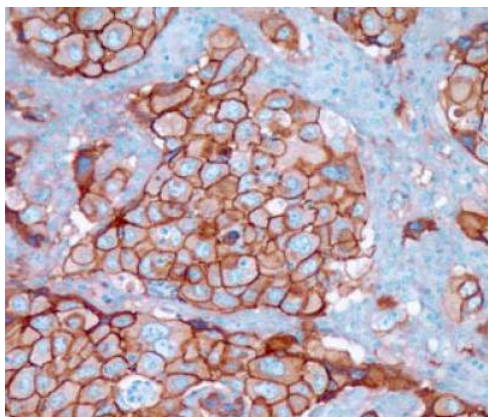
**Ig Class:** Rabbit IgG

**Storage:** Store vial at 4°C. When stored at 2-8°C, this antibody is stable for 24 months

**Staining procedures:** Use formalin-fixed and paraffin-embedded sections. *Retrieval conditions:* Pretreatment of deparaffinized tissue with heat-induced epitope retrieval is recommended. *Detection methods:* Polymer anti-mouse/rabbit Ig detection system. *Working dilution:* 1:50-100; *Positive Control:* Skin or breast carcinoma. *Cellular Localization:* Membrane. *Intended Use:* In Vitro Diagnosis (IVD).

**Description:** Cadherins comprise a family of Ca<sup>2+</sup>-dependent adhesion molecules that function to mediate cell-cell binding critical to the maintenance of tissue structure and morphogenesis. The classical cadherins, E-, N- and P-cadherin, consist of large extracellular domains characterized by a series of five homologous NH<sub>2</sub> terminal repeats. The most distal of these cadherins is thought to be responsible for binding specificity, transmembrane domains and carboxy terminal intracellular domains. The relatively short intracellular domains interact with a variety of cytoplasmic proteins, such as β-catenin, to regulate cadherin function. Members of this family of adhesion proteins include rat cadherin K (and its human homolog, cadherin-6), R-cadherin, Bcadherin, E/P cadherin and cadherin-5.

**Supplied As:** Antibody in 0.2% BSA and 15mM sodium azide



*Formalin-fixed, paraffin-embedded human infiltrating breast carcinoma stained with anti-E-cadherin antibody using peroxidase-conjugate and DAB chromogen. Note the membrane staining of carcinoma cells*

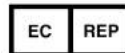
**Cat. #Z2105 (1.0 ml)**

---

**ZETA** Corporation  
65 N 1<sup>st</sup> Ave, Ste 202C  
Arcadia, CA 91006, USA  
Tel: (626) 355-2053  
<http://www.zeta-corp.com>



Zeta Corporation



**Emergo Europe B.V.**  
Prinsessegracht 20  
2514 AP The Hague  
The Netherlands  
Tel: +31 70 345 8570