
Desmin (Clone ZM34) Mouse Monoclonal Antibody

Specificity: Human

Immunogen: Recombinant human full-length desmin protein

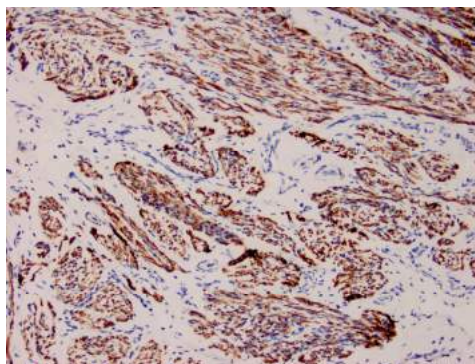
Ig Class: IgG1/k

Storage: Store vial at 4°C. When stored at 2-8°C, this antibody is stable for 24 months

Staining procedures: Use formalin-fixed and paraffin-embedded sections. *Retrieval conditions:* Pretreatment of deparaffinized tissue with heat-induced epitope retrieval is recommended. *Detection methods:* Polymer anti-mouse/rabbit Ig detection system. *Working dilution:* 1:100-200; *Positive Control:* Skeletal muscle or rhabdomyosarcoma. *Cellular Localization:* Cytoplasmic and luminal membrane. *Intended Use:* In vitro diagnosis (IVD).

Description: Desmin is an intermediate filament protein of both smooth and striated muscles. Antibody to desmin reacts with striated (skeletal and cardiac) as well as smooth muscle cells. In skeletal and cardiac muscles, the staining is confined to the Z-bands giving a characteristic striated appearance. Anti-desmin antibody is useful in identification of tumors of myogenic origin. It reacts with leiomyosarcomas (smooth muscle) as well as rhabdomyosarcomas (striated muscle).

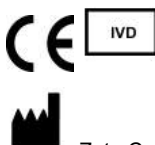
Supplied As: Tissue culture supernatant with 0.2% BSA and 15mM sodium azide.



Formalin-Formalin-fixed, paraffin-embedded human uterus stained with anti-desmin antibody using peroxidase-conjugate and DAB chromogen. Note the cytoplasmic staining of smooth muscle cells

Cat. #Z2339 (1.0 ml)

ZETA Corporation
65 N 1st Ave, Ste 202C
Arcadia, CA 91006, USA
Tel: (626) 355-2053
<http://www.zeta-corp.com>



Zeta Corporation



Emergo Europe B.V.
Prinsessegracht 20
2514 AP The Hague
The Netherlands
Tel: +31 70 345 8570