

---

## Desmin (Clone EP15) Rabbit Monoclonal Antibody

**Specificity:** Human

**Immunogen:** Synthetic peptide corresponding to human desmin C-terminus

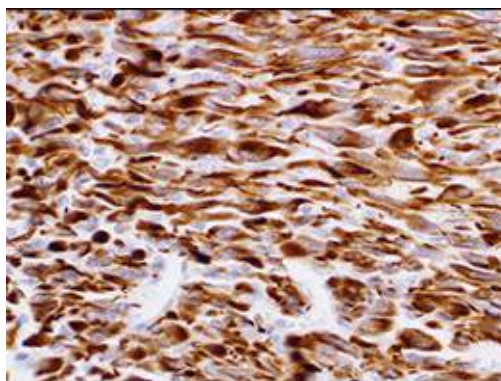
**Ig Class:** IgG

**Storage:** Store vial at 4°C. When stored at 2-8°C, this antibody is stable for 24 months

**Staining procedures:** Use formalin-fixed and paraffin-embedded sections. *Retrieval conditions:* Pretreatment of deparaffinized tissue with heat-induced epitope retrieval is recommended. *Detection methods:* Polymer anti-mouse/rabbit Ig detection system. *Working dilution:* 1:50-250; *Positive Control:* Skeletal muscle or rhabdomyosarcoma. *Cellular Localization:* Cytoplasmic and luminal membrane. *Intended Use:* In vitro diagnosis (IVD).

**Description:** Desmin is an intermediate filament protein of both smooth and striated muscles. Antibody to desmin reacts with striated (skeletal and cardiac) as well as smooth muscle cells. In skeletal and cardiac muscles, the staining is confined to the Z-bands giving a characteristic striated appearance. Anti-desmin antibody is useful in identification of tumors of myogenic origin. It reacts with leiomyosarcomas (smooth muscle) as well as rhabdomyosarcomas (striated muscle).

**Supplied As:** Tissue culture supernatant with 0.2% BSA and 15mM sodium azide.



*Formalin-Formalin-fixed, paraffin-embedded human skeletal muscle stained with anti-desmin antibody using peroxidase-conjugate and DAB chromogen. Note the cytoplasmic staining of muscle cells*

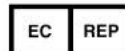
Cat. #Z2307 (1.0 ml)

---

**ZETA** Corporation  
65 N 1<sup>st</sup> Ave, Ste 202C  
Arcadia, CA 91006, USA  
Tel: (626) 355-2053  
<http://www.zeta-corp.com>



Zeta Corporation



**Emergo Europe B.V.**  
Prinsessegracht 20  
2514 AP The Hague  
The Netherlands  
Tel: +31 70 345 8570