

Cytokeratin, LMW (Clone AE1) Mouse Monoclonal Antibody

Specificity: Human, monkey, cow, rabbit, mouse, rat, chicken. Others-not known

Immunogen: Epidermal keratins of human origin

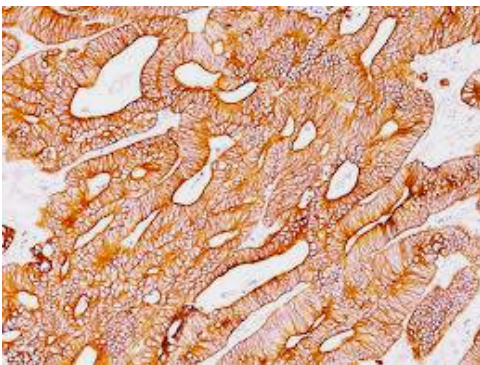
Ig Class: IgG1/ κ

Storage: Store vial at 4°C. When stored at 2-8°C, this antibody is stable for 24 months

Staining procedures: Use formalin-fixed and paraffin-embedded sections. *Retrieval conditions:* Digestion with trypsin, 1mg/ml in PBS, at 37°C for 10 minutes. *Detection methods:* Polymer anti-mouse/rabbit Ig detection system. *Working dilution:* 1:100-200; *Positive Control:* Squamous cell carcinoma. *Cellular Localization:* Membranous and cytoplasmic. *Intended Use:* In vitro diagnosis (IVD).

Description: Twenty human keratins are resolved with two-dimensional gel electrophoresis into acidic (pI <5.7) and basic (pI >6.0) subfamilies. The acidic keratins have molecular weights of 56.5, 55, 51, 50, 50', 48, 46, 45, and 40kDa. The basic keratins have molecular weights of 65-67, 64, 59, 58, 56 and 52kDa. Members of acidic and basic subfamilies are found together in pairs. The composition of keratin pairs varies with cell type, differentiation status and environment. Many studies have shown the usefulness of keratins as markers in cancer research and tumor diagnosis. AE1 labels most acidic keratins; therefore, it is a broadly reactive antibody staining most epithelia and their neoplasms. AE1 is particularly suited to distinguish poorly differentiated carcinomas from non-epithelial neoplasms. This marker stains both normal and neoplastic cells of epithelial origin.

Supplied As: Purified antibody 0.2% BSA and 15mM sodium azide.



References:

1. Weiss RA, et al. *J Cell Biol.* 1984; 98:1397-406.
2. Swanson PE, et al. *Am J Clin Pathol.* 1991; 95:S2-7.
3. Demetris AJ, et al. *Am J Pathol.* 1996; 149:439-48.

Formalin-fixed, paraffin-embedded human colon adenocarcinoma stained with anti-AE3 antibody using peroxidase-conjugate and DAB chromogen. Note the cytoplasmic staining of tumor cells

Cat. #Z2267 (1.0 ml)

ZETA Corporation
65 N 1st Ave, Ste 202C
Arcadia, CA 91006, USA
Tel: (626) 355-2053
<http://www.zeta-corp.com>



Zeta Corporation



Emergo Europe B.V.
Prinsessegracht 20
2514 AP The Hague
The Netherlands
Tel: +31 70 345 8570