
Cytokeratin, HMW (Clone 34 β E12)

Mouse Monoclonal Antibody

Specificity: Human, monkey, horse, and rabbit. Others not tested.

Immunogen: Solubilized keratin extracted from human stratum corneum.

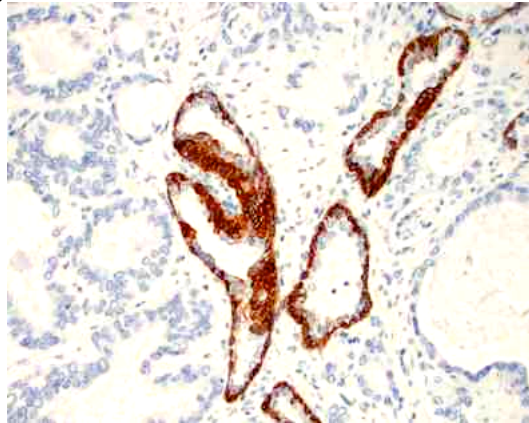
Ig Class: Mouse IgG1

Storage: Store vial at 4°C. When stored at 2-8°C, this antibody is stable for 24 months

Staining procedures: Use formalin-fixed and paraffin-embedded sections. *Retrieval conditions:* Pretreatment of tissue with proteolytic enzymes should be performed prior to staining. *Detection methods:* Polymer anti-mouse/rabbit Ig detection system. *Working dilution:* 1:100; *Positive Control:* Squamous cell carcinoma, prostate. *Cellular Localization:* Membranous and cytoplasmic. *Intended Use:* In vitro diagnosis (IVD).

Description: Keratin 34 β E12 antibody recognizes keratin 1, 5, 10, and 14 in the Moll catalog (MW 68kDa, 58kDa, 56.5kDa, and 50kDa), respectively. Keratin 34 β E12 antibody promises to be a specific marker useful in differential identification of squamous carcinomas from adenocarcinomas and differential diagnosis of benign and malignant tumors of prostatic gland. In normal cells, it labels squamous, ductal and other complex epithelia. It reacts with benign small-acinar lesions of the prostate and does not react with hepatocytes, pancreatic acinar cells, proximal renal tubes or endometrial glands. In tumor cells, this antibody is reactive with both squamous and ductal neoplasms and variably with those derived from simple epithelium.

Supplied As: Purified antibody with 0.2% BSA and 15 mM sodium azide.



Formalin-fixed, paraffin-embedded human prostate tissue with carcinoma stained with anti-HMW keratin clone 34 β E12 antibody using peroxidase-conjugate and DAB chromogen. Note membrane and cytoplasmic staining of basal cells of normal glands, whereas carcinoma glands are negative

Cat. #Z2019 (1.0 ml)

ZETA Corporation
65 N 1st Ave, Ste 202C
Arcadia, CA 91006, USA
Tel: (626) 355-2053
<http://www.zeta-corp.com>



Zeta Corporation

Emergo Europe B.V.
Prinsessegracht 20
2514 AP The Hague
The Netherlands
Tel: +31 70 345 8570