

Cytokeratin (Clone CAM5.2)

Mouse Monoclonal Antibody

Specificity: Human. Others-not known

Immunogen: Purified human keratin 8

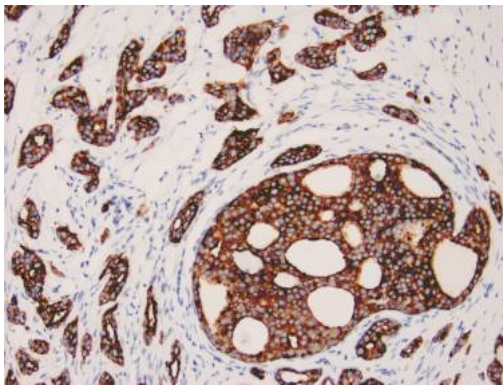
Ig Class: IgG2a/k

Storage: Store vial at 4°C. When stored at 2-8°C, this antibody is stable for 24 months

Staining procedures: Use formalin-fixed and paraffin-embedded sections. *Retrieval conditions:* Pretreatment of deparaffinized tissue with heat-induced epitope retrieval is recommended. *Detection methods:* Polymer anti-mouse/rabbit Ig detection system. *Working dilution:* 1:10; *Positive Control:* Ovarian carcinoma. *Cellular Localization:* Cytoplasmic. *Intended Use:* In Vitro Diagnosis (IVD).

Description: Anti-Cytokeratin (CAM 5.2) reagent has a primary reactivity with human keratin proteins that correspond to Moll's peptides #7 and #8, Mr 48 and 52 kDa, respectively. Cytokeratin 7 and 8 are present on secretory epithelia of normal human tissue but not on stratified squamous epithelium. Anti-Cytokeratin (CAM 5.2) stains most epithelial-derived tissue, including liver, renal tubular epithelium, and hepatocellular and renal cell carcinomas. Anti-Cytokeratin (CAM 5.2) may not react with some squamous cell carcinomas.

Supplied As: Purified antibody with 0.2% BSA and 15mM sodium azide.



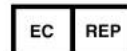
References:

1. Pizarro CB, et al. *Am J Med Sci.* 2002; 324:326-30.
2. Fan X, et al. *J Histochem Cytochem.* 2002; 50:1509-16.
3. Japon MA, et al.: *J Clin Endocrinol Metab.* 2002; 87:1879-84.

Formalin-fixed, paraffin-embedded human breast carcinoma stained with antibody CAM5.2 using peroxidase-conjugate and AEC chromogen. Note the cytoplasmic staining of tumor cells

Cat. #Z2018 (5.0 ml) & Z2018S (1.0 ml)

ZETA Corporation
65 N 1st Ave, Ste 202C
Arcadia, CA 91006, USA
Tel: (626) 355-2053
<http://www.zeta-corp.com>



Zeta Corporation

Emergo Europe B.V.
Prinsessegracht 20
2514 AP The Hague
The Netherlands
Tel: +31 70 345 8570