

# Cytokeratin (Clone CAM5.2)

## Mouse Monoclonal Antibody

**Specificity:** Human. Others-not known

**Immunogen:** Purified human keratin 8

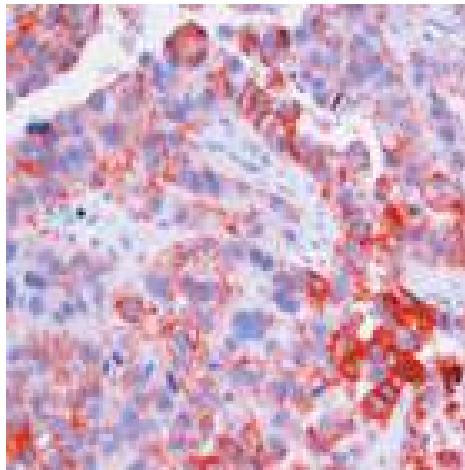
**Ig Class:** IgG2a/ $\kappa$

**Storage:** Store vial at 4°C. When stored at 2-8°C, this antibody is stable for 24 months

**Staining procedures:** Use formalin-fixed and paraffin-embedded sections. *Retrieval conditions:* Pretreatment of deparaffinized tissue with heat-induced epitope retrieval is recommended. *Detection methods:* Polymer anti-mouse/rabbit Ig detection system. *Working dilution:* 1:10; *Positive Control:* Ovarian carcinoma. *Cellular Localization:* Cytoplasmic. *Intended Use:* In Vitro Diagnosis (IVD).

**Description:** Anti-Cytokeratin (CAM 5.2) reagent has a primary reactivity with human keratin proteins that correspond to Moll's peptides #7 and #8, Mr 48 and 52 kDa, respectively. Cytokeratin 7 and 8 are present on secretory epithelia of normal human tissue but not on stratified squamous epithelium. Anti-Cytokeratin (CAM 5.2) stains most epithelial-derived tissue, including liver, renal tubular epithelium, and hepatocellular and renal cell carcinomas. Anti-Cytokeratin (CAM 5.2) may not react with some squamous cell carcinomas.

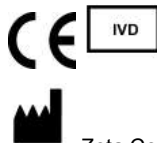
**Supplied As:** Purified antibody from ascites fluid by protein G chromatography in 0.2% BSA and 15mM sodium azide.



*Formalin-fixed, paraffin-embedded human ovarian carcinoma stained with antibody CAM5.2 using peroxidase-conjugate and AEC chromogen. Note the cytoplasmic staining of tumor cells*

**Cat. #Z2018 (5.0 ml) & Z2018S (1.0 ml)**

**ZETA** Corporation  
65 N 1<sup>st</sup> Ave, Ste 202C  
Arcadia, CA 91006, USA  
Tel: (626) 355-2053  
<http://www.zeta-corp.com>



Zeta Corporation



**Emergo Europe B.V.**  
Prinsessegracht 20  
2514 AP The Hague  
The Netherlands  
Tel: +31 70 345 8570