

Cytokeratin 8/18 (Clone ZM125)

Mouse Monoclonal Antibody

Specificity: Human. Others-not known

Immunogen: Cytoskeleton preparation from HeLa cells

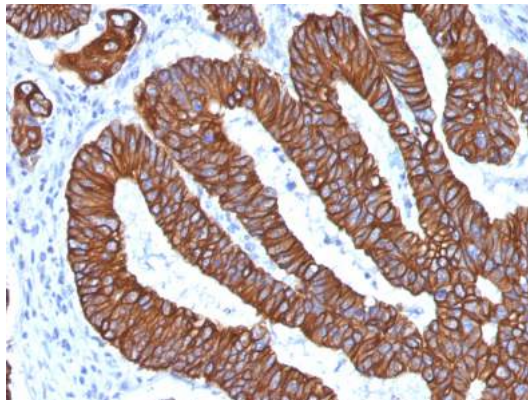
Ig Class: IgG1 κ

Storage: Store vial at 4 °C. When stored at 2-8 °C, this antibody is stable for 24 months.

Staining procedures: Use formalin-fixed and paraffin-embedded sections. *Retrieval conditions:* Pretreatment of deparaffinized tissue with heat-induced epitope retrieval is recommended. *Detection methods:* Polymer anti-mouse/rabbit Ig detection system. *Working dilution:* 1:100-200; *Positive Control:* Skin, breast carcinoma. *Cellular Localization:* Cytoplasmic. *Intended Use:* In Vitro Diagnosis (IVD).

Description: Cytokeratin 8 (CK8) belongs to the type II (or B or basic) subfamily of high molecular weight cytokeratins and exists in combination with cytokeratin 18 (CK18). This MAb recognizes all simple epithelia including glandular epithelium, for example thyroid, female breast, gastrointestinal tract, respiratory tract, and urogenital tract including transitional epithelium. All adenocarcinomas and most squamous carcinomas are positive but keratinizing squamous carcinomas are usually negative. This antibody is useful in demonstrating the presence of Paget cells; there is very little keratin 18 in the normal epidermis so only Paget cells are stained.

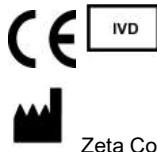
Supplied As: Antibody purified from the ascites fluid by Protein G chromatography in 0.2% BSA and 15mM sodium azide.



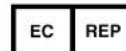
Formalin-fixed, paraffin-embedded human colon carcinoma stained with anti-keratin 8/18 antibody using peroxidase-conjugate and DAB chromogen. Note the cytoplasmic staining of tumor cells

Cat. #Z2435 (1.0 ml)

ZETA Corporation
65 N 1st Ave, Ste 202C
Arcadia, CA 91006, USA
Tel: (626) 355-2053
<http://www.zeta-corp.com>



Zeta Corporation



Emergo Europe B.V.
Prinsessegracht 20
2514 AP The Hague
The Netherlands
Tel: +31 70 345 8570