

Cytokeratin 8/18 (Clone B22.1&B23.1)

Mouse Monoclonal Antibodies

Specificity: Human. Others-not known

Immunogen: Cytokeratins purified from breast cancer MCF-7 cells

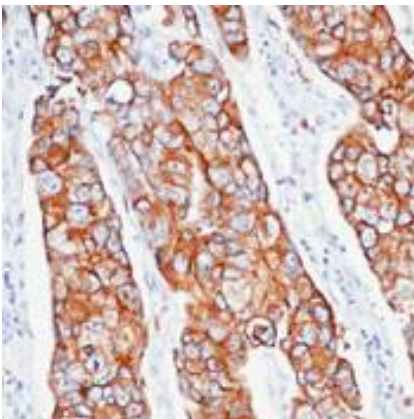
Ig Class: IgG1 κ /IgG1 κ

Storage: Store vial at 4 °C. When stored at 2-8 °C, this antibody is stable for 24 months.

Staining procedures: Use formalin-fixed and paraffin-embedded sections. *Retrieval conditions:* Pretreatment of deparaffinized tissue with heat-induced epitope retrieval is recommended. *Detection methods:* Polymer anti-mouse/rabbit Ig detection system. *Working dilution:* 1:50-100; *Positive Control:* Skin, breast carcinoma. *Cellular Localization:* Cytoplasmic. *Intended Use:* In Vitro Diagnosis (IVD).

Description: Clone 5D3 antibody recognizes all simple epithelia including glandular epithelium, for example thyroid, female breast, gastrointestinal tract, respiratory tract, and urogenital tract including transitional epithelium. All adenocarcinomas and most squamous carcinomas are positive but keratinizing squamous carcinomas are usually negative. Clone K8.8 + DC10 is indistinguishable from the staining obtained with monoclonal antibody 5D3.

Supplied As: Purified antibody with 0.2% BSA and 15mM sodium azide.



References:

1. Angus B, et al. *J Pathol.* 1987; 155:377-84.
2. Moll R, et al. *Histochem Cell Biol.* 2008; 129:705-33.
3. Sasaki M, et al. *Histopathology.* 1998; 32:199-208.

Formalin-fixed, paraffin-embedded human breast cancer stained with anti-keratin 8/18 antibody using peroxidase-conjugate and DAB chromogen. Note the cytoplasmic staining of tumor cells

Cat. #Z2252 (1.0 ml)

ZETA Corporation
65 N 1st Ave, Ste 202C
Arcadia, CA 91006, USA
Tel: (626) 355-2053
<http://www.zeta-corp.com>



Zeta Corporation



Emergo Europe B.V.
Prinsessegracht 20
2514 AP The Hague
The Netherlands
Tel: +31 70 345 8570