
Cytokeratin 7 (Clone OV-TL 12/30)

Mouse Monoclonal Antibody

Specificity: Human. Does not react with rat. Others-not known

Immunogen: OTN II ovarian carcinoma cell line

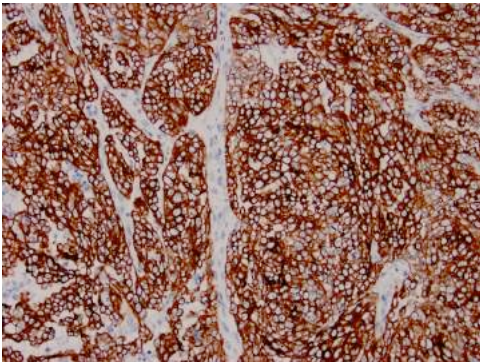
Ig Class: IgG1/κ

Storage: Store vial at 4°C. When stored at 2-8°C, this antibody is stable for 24 months

Staining procedures: Use formalin-fixed and paraffin-embedded sections. *Retrieval conditions:* Pretreatment of deparaffinized tissue with heat-induced epitope retrieval is recommended. *Detection methods:* Polymer anti-mouse/rabbit Ig detection system. *Working dilution:* 1: 100-100; *Positive Control:* Ovarian carcinoma. *Cellular Localization:* Cytoplasmic. *Intended Use:* In vitro diagnosis (IVD).

Description: Cytokeratin 7 is a basic cytokeratin which is found in most glandular and transitional epithelia but not in the stratified squamous epithelia. Keratin 7 is expressed in the epithelial cells of ovary, lung, and breast but not of colon, prostate, or gastrointestinal tract. Antibody to cytokeratin is useful in distinguishing ovarian carcinomas (keratin 7+) from colon carcinomas (keratin 7-).

Supplied As: Purified antibody in 0.2% BSA and 15mM sodium azide.

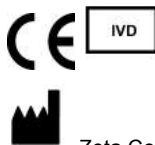
**References:**

1. Murray SK, et al. *Am J Surg Pathol.* 2004; 28:1154-62.
2. Chu P, et al. *Mod Pathol.* 2000; 13:962-72.
3. McCluggage WG, et al. *Histopathology.* 2005; 47:231-247.

Formalin-fixed, paraffin-embedded human cholangiocarcinoma stained with anti-Keratin 7 antibody using peroxidase-conjugate and DAB chromogen. Note the cytoplasmic staining of tumor cells

Cat. #Z2067 (1.0 ml)

ZETA Corporation
65 N 1st Ave, Ste 202C
Arcadia, CA 91006, USA
Tel: (626) 355-2053
<http://www.zeta-corp.com>



Zeta Corporation



Emergo Europe B.V.
Prinsessegracht 20
2514 AP The Hague
The Netherlands
Tel: +31 70 345 8570