

---

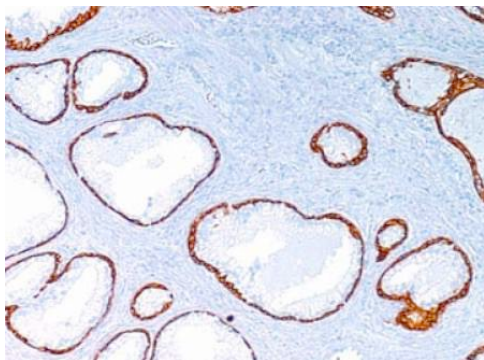
## Cytokeratin 5 (Clone EP1601Y) Rabbit Monoclonal Antibody

<b>Specificity:</b>	Human. Others-not known
<b>Immunogen:</b>	Isolated cytokeratin 5
<b>Ig Class:</b>	Rabbit IgG
<b>Storage:</b>	Store vial at 4°C. When stored at 2-8°C, this antibody is stable for 24 months

**Staining procedures:** Use formalin-fixed and paraffin-embedded sections. *Retrieval conditions:* Pretreatment of deparaffinized tissue with heat-induced epitope retrieval is recommended. *Detection methods:* Polymer anti-mouse/rabbit Ig detection system. *Working dilution:* 1:50-200; *Positive Control:* Mesothelioma. *Cellular Localization:* Cytoplasmic. *Intended Use:* In vitro diagnosis (IVD).

**Description:** Twenty human keratins are divided into acidic (pI <5.7) and basic (pI >6.0) subfamilies. Members of the acidic and basic subfamilies are found together in pairs. The composition of keratin pairs varies with the epithelial cell type, stage of differentiation, cellular growth environment, and disease state. Many studies have shown the usefulness of keratins as markers in cancer research and tumor identification. Point mutations in cytokeratin5 gene can cause various types of epidermolysis bullosa simplex. It is expressed in most epithelial and biphasic mesotheliomas.

**Supplied As:** Purified antibody with 0.2% BSA and 15mM sodium azide.

**References:**

1. Ordonez NG. *Human Pathology*. 2007; 38:1–16.
2. Kargi A, et al. *Appl Immunohistochem Mol Morphol*. 2007; 15:415–420.
3. Clarke CL, et al. *J Pathol*. 2004; 204:147-52.

*Formalin-fixed, paraffin-embedded human prostate stained with anti-Keratin 5 antibody using peroxidase-conjugate and DAB chromogen. Note the cytoplasmic staining of basal cells*

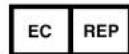
Cat. #Z2538 (1.0ml)

---

**ZETA** Corporation  
65 N 1<sup>st</sup> Ave, Ste 202C  
Arcadia, CA 91006, USA  
Tel: (626) 355-2053  
<http://www.zeta-corp.com>



Zeta Corporation



**Emergo Europe B.V.**  
Prinsessegracht 20  
2514 AP The Hague  
The Netherlands  
Tel: +31 70 345 8570