

---

# Cytokeratin 5/6 (Clone ZM43)

## Mouse Monoclonal Antibody

**Specificity:** Human. Others-not known

**Immunogen:** Recombinant full-length human KRT5 protein

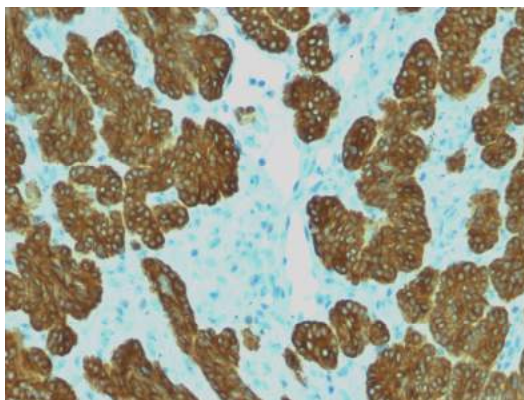
**Ig Class:** IgG2b/ $\kappa$

**Storage:** Store vial at 4°C. When stored at 2-8°C, this antibody is stable for 24 months

**Staining procedures:** Use formalin-fixed and paraffin-embedded sections. *Retrieval conditions:* Pretreatment of deparaffinized tissue with heat-induced epitope retrieval is recommended. *Detection methods:* Polymer anti-mouse/rabbit Ig detection system. *Working dilution:* 100-200; *Positive Control:* Mesothelioma, prostate. *Cellular Localization:* Cytoplasmic. *Intended Use:* In vitro diagnosis (IVD).

**Description:** It recognizes polypeptides of 58kDa and 56kDa, identified as cytokeratin 5 and 6 respectively. It shows no reaction with keratin 1, 8, or 19. It stains the basal cells of squamous and glandular epithelia, part of stratum spinosum of squamous epithelium, myoepithelium, and mesothelium. It does not stain adenous epithelium. Therefore, this antibody can be used to distinguish squamous carcinoma from adenocarcinoma, and to differentiate epithelioid mesothelioma from non-epithelioid mesothelioma and adenocarcinoma. It is also a useful antibody to distinguish benign ductal hyperplasias from non-invasive neoplastic proliferations. Positive tissue: Skin

**Supplied As:** Purified antibody with 0.2% BSA and 15mM sodium azide.



*Formalin-fixed, paraffin-embedded human basal cell carcinoma stained with anti-Keratin 5/6 antibody using peroxidase-conjugate and DAB chromogen. Note the cytoplasmic staining of tumor cells.*

**Cat. #Z2350 (1.0 ml)**

---

**ZETA** Corporation  
65 N 1<sup>st</sup> Ave, Ste 202C  
Arcadia, CA 91006, USA  
Tel: (626) 355-2053  
<http://www.zeta-corp.com>



Zeta Corporation



---

**Emergo Europe B.V.**  
Prinsessegracht 20  
2514 AP The Hague  
The Netherlands  
Tel: +31 70 345 8570