
Cytokeratin 5 / 6 (Clone D5/16B4)

Mouse Monoclonal Antibody

Specificity: Human. Others-not known

Immunogen: Isolated cytokeratin 5

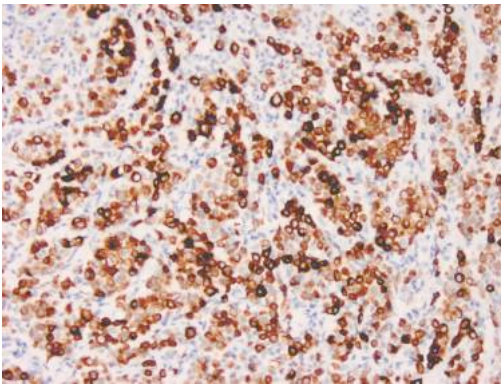
Ig Class: Mouse IgG1/ κ

Storage: Store vial at 4°C. When stored at 2-8°C, this antibody is stable for 24 months

Staining procedures: Use formalin-fixed and paraffin-embedded sections. *Retrieval conditions:* Pretreatment of deparaffinized tissue with heat-induced epitope retrieval is recommended. *Detection methods:* Polymer anti-mouse/rabbit Ig detection system. *Working dilution:* 100-200; *Positive Control:* Mesothelioma, prostate. *Cellular Localization:* Cytoplasmic. *Intended Use:* In vitro diagnosis (IVD).

Description: Twenty human keratins are divided into acidic ($pI < 5.7$) and basic ($pI > 6.0$) subfamilies. Members of the acidic and basic subfamilies are found together in pairs. The composition of keratin pairs varies with the epithelial cell type, stage of differentiation, cellular growth environment, and disease state. Many studies have shown the usefulness of keratins as markers in cancer research and tumor identification.

Supplied As: Purified antibody with 0.2% BSA and 15mM sodium azide.



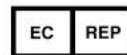
References:

1. Ordóñez NG1. *Am J Surg Pathol.* 1998; 22:1215-1221.
2. Takahashi K, et al. *Mol Cell Biol.* 1989; 9:3685-97.

Formalin-fixed, paraffin-embedded mesothelioma stained with anti-Keratin 5/6 antibody using peroxidase-conjugate and DAB chromogen. Note the cytoplasmic staining of basal cells of benign but not tumor glands

Cat. #Z2133 (1.0 ml)

ZETA Corporation
65 N 1st Ave, Ste 202C
Arcadia, CA 91006, USA
Tel: (626) 355-2053
<http://www.zeta-corp.com>



Zeta Corporation

Emergo Europe B.V.
Prinsessegracht 20
2514 AP The Hague
The Netherlands
Tel: +31 70 345 8570