
Cytokeratin 20 (Clone ZM42)

Mouse Monoclonal Antibody

Specificity: Human. Others not tested.

Immunogen: Recombinant human KRT20 protein fragment (around aa 196-323)

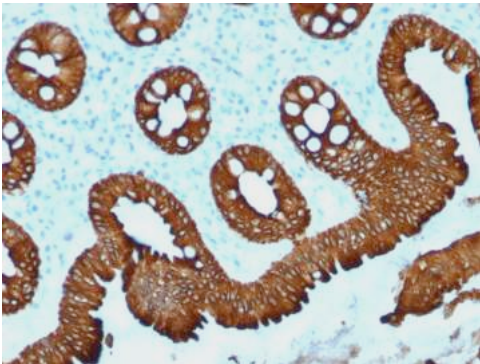
Ig Class: IgG2b/k

Storage: Store vial at 4°C. When stored at 2-8°C, this antibody is stable for 24 months.

Staining procedures: Use formalin-fixed and paraffin-embedded sections. *Retrieval conditions:* Pretreatment of deparaffinized tissue with heat-induced epitope retrieval is recommended. *Detection methods:* Polymer anti-mouse/rabbit Ig detection system. *Working dilution:* 1:100-200; *Positive Control:* Colon carcinoma. *Cellular Localization:* Cytoplasmic. *Intended Use:* In vitro diagnosis (IVD).

Description: This MAb recognizes an intermediate filament protein of 46kDa, identified as cytokeratin 20 (KRT20). KRT is abundantly expressed in goblet cells and enterocytes of the gastrointestinal tract. It is a useful marker of pancreatic and colorectal cancer. KRT20 is expressed under normal, hyperplastic and neoplastic conditions. It has been detected in adenocarcinomas of the colon, stomach and biliary tract. Breast carcinomas are generally non-reactive.

Supplied As: Purified antibody with 0.2% BSA and 15mM sodium azide.

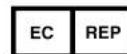
**References:**

1. Moll R, et al. *J Cell Biol.* 1990; 111:567-80.
2. Han AC, Duszak R Jr. *Cancer.* 1999; 86:2327-30.
3. Moll R, et al. *AJP.* 1992; 140:427-47.

Formalin-fixed, paraffin-embedded human colon carcinoma stained with anti-CK20 antibody using peroxidase-conjugate and DAB chromogen. Note the cytoplasmic staining of carcinoma glands

Cat. #Z2349 (1.0 ml)

ZETA Corporation
65 N 1st Ave, Ste 202C
Arcadia, CA 91006, USA
Tel: (626) 355-2053
<http://www.zeta-corp.com>



Zeta Corporation

Emergo Europe B.V.
Prinsessegracht 20
2514 AP The Hague
The Netherlands
Tel: +31 70 345 8570