
Keratin 20 (Clone Ks20.8)

Mouse Monoclonal Antibody

Specificity: Human and Mouse. Does not react with rat. Others-not known

Immunogen: Semi-purified human cytokeratin preparation

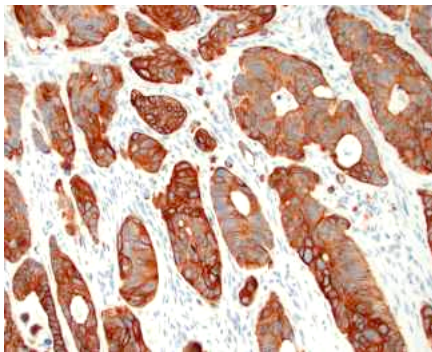
Ig Class: IgG2a

Storage: Store vial at 4°C. When stored at 2-8°C, this antibody is stable for 24 months.

Staining procedures: Use formalin-fixed and paraffin-embedded sections. *Retrieval conditions:* Pretreatment of deparaffinized tissue with heat-induced epitope retrieval is recommended. *Detection methods:* Polymer anti-mouse/rabbit Ig detection system. *Working dilution:* 1:50-200; *Positive Control:* Colon carcinoma. *Cellular Localization:* Cytoplasmic. *Intended Use:* In vitro diagnosis (IVD).

Description: Keratin 20 / cytokeratin20 (CK20) is a Type-I keratin which is primarily expressed in gastric and intestinal epithelium, urothelium, and Merkel-cells. CK20 is expressed in adenocarcinomas of the colon, stomach, pancreas and the bile system. CK20 is also present in mucinous ovarian tumors, transitional-cell and Merkel-cell carcinomas. Notably, the squamous cell carcinomas and adenocarcinomas of the breast, lung, and endometrium, non-mucinous tumors of the ovary, and small cell carcinomas lack in CK20.

Supplied As: Purified antibody with 0.2% BSA and 15mM sodium azide.

**References:**

1. Moll R, et al. *J Cell Biol.* 1990; 111:567-80.
2. Han AC, Duszak R Jr. *Cancer.* 1999; 86:2327-30.
3. Moll R, et al. *AJP.* 1992; 140:427-47.

Formalin-fixed, paraffin-embedded human colon carcinoma stained with anti-keratin 20 antibody using peroxidase-conjugate and DAB chromogen. Note the cytoplasmic staining of carcinoma glands

Cat. #Z2065 (1.0 ml)

ZETA Corporation
65 N 1st Ave, Ste 202C
Arcadia, CA 91006, USA
Tel: (626) 355-2053
<http://www.zeta-corp.com>



Zeta Corporation



Emergo Europe B.V.
Prinsessegracht 20
2514 AP The Hague
The Netherlands
Tel: +31 70 345 8570