

---

## Keratin 20 (Clone Ks20.8) Mouse Monoclonal Antibody

**Specificity:** Human and Mouse. Does not react with rat. Others-not known

**Immunogen:** Semi-purified human cytokeratin preparation

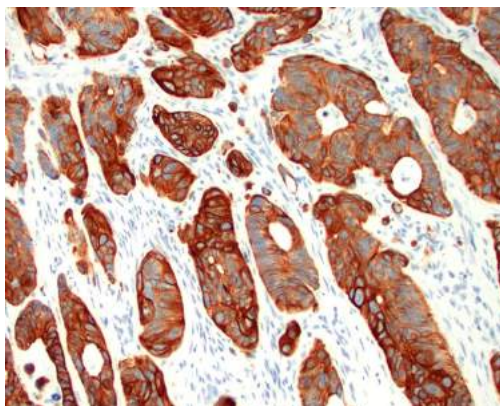
**Ig Class:** IgG2a

**Storage:** Store vial at 4°C. When stored at 2-8°C, this antibody is stable for 24 months.

**Staining procedures:** Use formalin-fixed and paraffin-embedded sections. *Retrieval conditions:* Pretreatment of deparaffinized tissue with heat-induced epitope retrieval is recommended. *Detection methods:* Polymer anti-mouse/rabbit Ig detection system. *Working dilution:* 1:50-200; *Positive Control:* Colon carcinoma. *Cellular Localization:* Cytoplasmic. *Intended Use:* In vitro diagnosis (IVD).

**Description:** Keratin 20 / cytokeratin20 (CK20) is a Type-I keratin which is primarily expressed in gastric and intestinal epithelium, urothelium, and Merkel-cells. CK20 is expressed in adenocarcinomas of the colon, stomach, pancreas and the bile system. CK20 is also present in mucinous ovarian tumors, transitional-cell and Merkel-cell carcinomas. Notably, the squamous cell carcinomas and adenocarcinomas of the breast, lung, and endometrium, non-mucinous tumors of the ovary, and small cell carcinomas lack in CK20.

**Supplied As:** Tissue culture supernatant in 0.2% BSA and 15mM sodium azide.



*Formalin-fixed, paraffin-embedded human colon carcinoma stained with anti-keratin 20 antibody using peroxidase-conjugate and DAB chromogen. Note the cytoplasmic staining of carcinoma glands*

**Cat. #Z2065 (1.0 ml)**

---

**ZETA** Corporation  
65 N 1<sup>st</sup> Ave, Ste 202C  
Arcadia, CA 91006, USA  
Tel: (626) 355-2053  
<http://www.zeta-corp.com>



Zeta Corporation



**Emergo Europe B.V.**  
Prinsessegracht 20  
2514 AP The Hague  
The Netherlands  
Tel: +31 70 345 8570