
Keratin 19 (Clone BA17)

Mouse Monoclonal Antibody

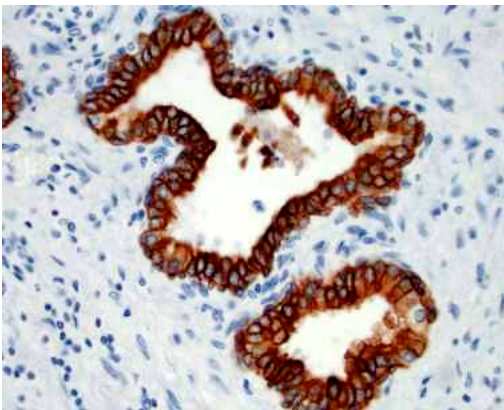
Specificity:	Human.
Immunogen:	Detergent-insoluble extract of human mammary epithelial organoids
Ig Class:	Mouse IgG1
Storage:	Store vial at 4°C. When stored at 2-8°C, this antibody is stable for 24 months

Staining procedures: Use formalin-fixed and paraffin-embedded sections. *Retrieval conditions:* Pretreatment of deparaffinized tissue with heat-induced epitope retrieval is recommended. *Detection methods:* Polymer anti-mouse/rabbit Ig detection system. *Working dilution:* 1:100-200; *Positive Control:* Skin. *Cellular Localization:* Cytoplasmic. *Intended Use:* In Vitro Diagnosis (IVD).

Description: Cytokeratin 19 is a member of type I acidic subfamily of intermediate filaments. It is expressed in various different human tissues except in liver. Keratin 19 is not expressed in hepatocytes, therefore, antibody to keratin 19 is useful in the identification of liver metastasis.

Comments: BA17 reacts with the MCF-7 cells, which are known to contain keratin 19. It shows no reaction with the cells lacking keratin 19 such as A431 and HeLa.

Supplied As: Purified antibody with 0.2% BSA and 15mM sodium azide.

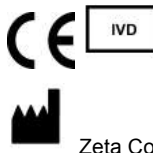
**References:**

1. Jain R, et al. *Appl Immunohistochem Mol Morphol.* 2010; 18:9-15.
2. Rosai J. *Tumori.* 2003; 89:517-9.
3. de Matos LL, et al. *Diagn Pathol.* 2012; 7:97.

Formalin-fixed, paraffin-embedded human pancreatic ducts stained with anti-keratin 19 antibody using peroxidase-conjugate and DAB chromogen. Note the cytoplasmic staining of ductal cells

Cat. #Z2134 (1.0 ml)

ZETA Corporation
65 N 1st Ave, Ste 202C
Arcadia, CA 91006, USA
Tel: (626) 355-2053
<http://www.zeta-corp.com>



Zeta Corporation



Emergo Europe B.V.
Prinsessegracht 20
2514 AP The Hague
The Netherlands
Tel: +31 70 345 8570