

Keratin 18 (Clone ZM205)

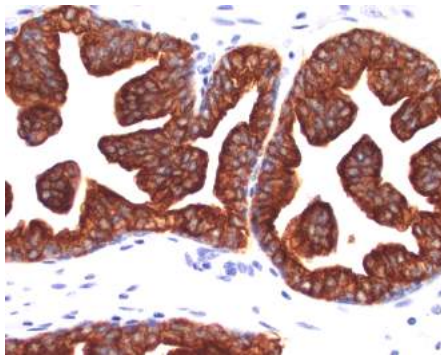
Mouse Monoclonal Antibody

| | |
|---------------------|--|
| Specificity: | Human. Does not react with rat. Others not known |
| Immunogen: | Recombinant human KRT18 protein |
| Ig Class: | Mouse IgG1/ κ |
| Storage: | Store vial at 4°C. When stored at 2-8°C, this antibody is stable for 24 months |

Staining procedures: Use formalin-fixed and paraffin-embedded sections. *Retrieval conditions:* Pretreatment of deparaffinized tissue with heat-induced epitope retrieval is recommended. *Detection methods:* Polymer anti-mouse/rabbit Ig detection system. *Working dilution:* 1:100-200; *Positive Control:* Breast carcinoma. *Cellular Localization:* Cytoplasmic. *Intended Use:* In vitro diagnosis (IVD).

Description: This MAb reacts with a wide variety of simple epithelia. It does not react with stratified squamous epithelia. It reacts with epithelial tumors of the gastrointestinal tract, lung, breast, pancreas, ovary, and thyroid. Cytokeratin 18, which belongs to the type A (acidic) subfamily of low molecular weight keratins, exists in combination with cytokeratin 8. It was reported that tissues from gastrointestinal tract are positive for both cytokeratin 8 and 18 but do not contain cytokeratin 14. Tissues from gastrointestinal tract, respiratory tract and urogenital tract, as well as endocrine and exocrine tissues and mesothelial cells are positive for cytokeratin 18.

Supplied As: Purified antibody with 0.2% BSA and 15mM sodium azide.

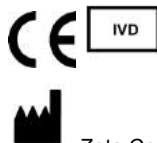
**References:**

1. Lane EB, et al. *Semin Cancer Biol* 1990; 1:165-79.
2. Miettinen M, et al. *Hum Pathol.* 2000; 31:1062-7.
3. Fogel M, et al. *Differentiation.* 1990; 45:242-9.

Formalin-fixed, paraffin-embedded human prostate tissue stained with anti-keratin 18 antibody using peroxidase-conjugate and DAB chromogen. Note the cytoplasmic staining of glandular cells

Cat. #Z2541(1.0 ml)

ZETA Corporation
65 N 1st Ave, Ste 202C
Arcadia, CA 91006, USA
Tel: (626) 355-2053
<http://www.zeta-corp.com>



Zeta Corporation



Emergo Europe B.V.
Prinsessegracht 20
2514 AP The Hague
The Netherlands
Tel: +31 70 345 8570