

Keratin 18 (Clone DC10) Mouse Monoclonal Antibody

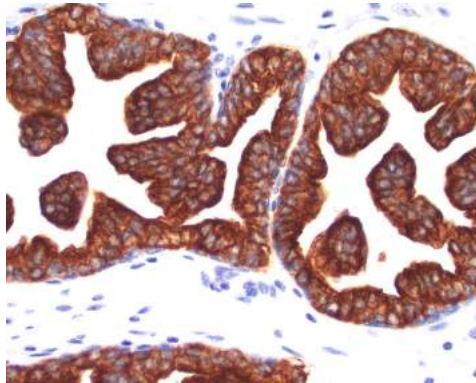
Specificity:	Human. Does not react with rat. Others not known
Immunogen:	Human breast cancer PMC 42 cells
Ig Class:	Mouse IgG1
Storage:	Store vial at 4°C. When stored at 2-8°C, this antibody is stable for 24 months

Staining procedures: Use formalin-fixed and paraffin-embedded sections. *Retrieval conditions:* Pretreatment of deparaffinized tissue with heat-induced epitope retrieval is recommended. *Detection methods:* Polymer anti-mouse/rabbit Ig detection system. *Working dilution:* 1:200; *Positive Control:* Breast carcinoma. *Cellular Localization:* Cytoplasmic. *Intended Use:* In vitro diagnosis (IVD).

Description: Keratin 18, which belongs to the type A (acidic) subfamily of low molecular weight keratins exists in combination with keratin 8. It was reported that tissues from gastrointestinal tract are positive for both keratin 8 and 18 but do not contain keratin 14. Tissues from gastrointestinal tract, respiratory tract and urogenital tract, as well as endocrine and exocrine tissues and mesothelial cells are positive for keratin 18.

Comments: DC10 recognizes a variety of simple epithelia including glandular epithelium but not stratified squamous epithelia.

Supplied As: Purified antibody with 0.2% BSA and 15mM sodium azide.



Formalin-fixed, paraffin-embedded human prostate tissue stained with anti-keratin 18 antibody using peroxidase-conjugate and DAB chromogen. Note the cytoplasmic staining of glandular cells

Cat. #Z2044 (1.0 ml)