
Keratin 17 (Clone E3)

Mouse Monoclonal Antibody

Specificity: Human and rat. Others-not known

Immunogen: Keratin purified from rat enterocytes

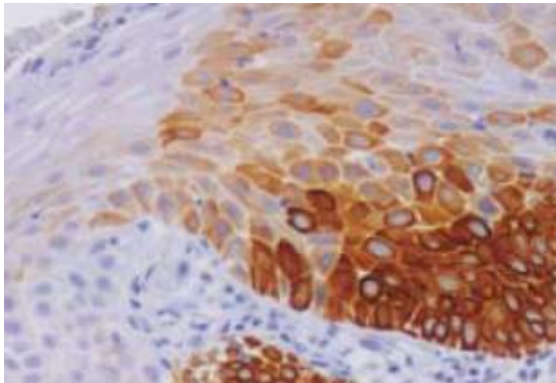
Ig Class: IgG1

Storage: Store vial at 4°C. When stored at 2-8°C, this antibody is stable for 24 months

Staining procedures: Use formalin-fixed and paraffin-embedded sections. *Retrieval conditions:* Pretreatment of deparaffinized tissue with heat-induced epitope retrieval is recommended. *Detection methods:* Polymer anti-mouse/rabbit Ig detection system. *Working dilution:* 1:100-200; *Positive Control:* Squamous cell carcinoma or ski. *Cellular Localization:* Cytoplasmic. *Intended Use:* In Vitro Diagnosis (IVD).

Description: The type I keratin 17 (K17) shows a peculiar localization in human epithelial appendages including hair follicles, which undergo a growth cycle throughout adult life. Additionally K17 is induced, along with K6 and K16, early after acute injury to human skin. Predominant expression of K17 and the frequent expression of K8 and K19, with little K6/K16 and K1/K10 expression are the characteristic features of basal cell carcinomas (BCC), suggesting that BCC is differentiated towards undifferentiated follicular epithelia, most probably hair bulge cells.

Supplied As: Purified antibody in 0.2% BSA and 15mM sodium azide.

**References:**

1. Regauer S, et al. *Histopathology*. 2007; 50:629-35.
2. Chu PG, et al. *Am J Surg Pathol*. 2005; 29:359-67.
3. Martens JE, et al. *Anticancer Res*. 2004; 24:771-5.

Formalin-fixed, paraffin-embedded human squamous cell carcinoma stained with anti-Keratin 17 antibody using peroxidase-conjugate and DAB chromogen. Note the cytoplasmic staining of tumor cells

Cat. #Z2254 (1.0 ml)

ZETA Corporation
65 N 1st Ave, Ste 202C
Arcadia, CA 91006, USA
Tel: (626) 355-2053
<http://www.zeta-corp.com>



Zeta Corporation

Emergo Europe B.V.
Prinsessegracht 20
2514 AP The Hague
The Netherlands
Tel: +31 70 345 8570