

Keratin 14 (Clone LL002)

Mouse Monoclonal Antibody

Specificity: Human and Rat. Others-not known

Immunogen: A synthetic peptide of 15 amino acid residues from the C-terminus of human keratin 14

Ig Class: Mouse IgG3

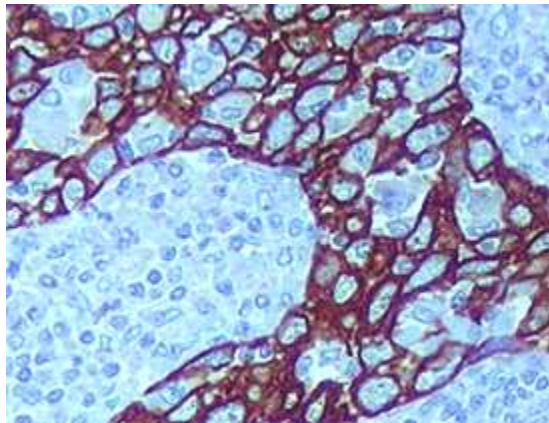
Storage: Store vial at 4°C. When stored at 2-8°C, this antibody is stable for 24 months

Staining procedures: Use formalin-fixed and paraffin-embedded sections. *Retrieval conditions:* Pretreatment of deparaffinized tissue with heat-induced epitope retrieval is recommended. *Detection methods:* Polymer anti-mouse/rabbit Ig detection system. *Working dilution:* 1:100-300; *Positive Control:* Skin, tonsil or squamous cell carcinoma. *Cellular Localization:* Cytoplasmic. *Intended Use:* In vitro diagnosis (IVD).

Description: Keratin 14 belongs to the type A (acidic) subfamily of low molecular weight keratins and exists in combination with keratin 5. Keratin 14 has been studied as a prognostic marker in breast cancer.

Comments: LL002 distinguishes stratified epithelial cells from simple epithelial cells and has been reported useful in the identification of squamous cell carcinomas.

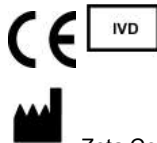
Supplied As: Purified antibody with 0.2% BSA and 15mM sodium azide.



Formalin-fixed, paraffin-embedded human tonsil stained with Keratin 14 using peroxidase-conjugate and DAB chromogen. Note the cytoplasmic staining of squamous cells

Cat. #Z2042 (1.0 ml)

ZETA Corporation
65 N 1st Ave, Ste 202C
Arcadia, CA 91006, USA
Tel: (626) 355-2053
<http://www.zeta-corp.com>



Zeta Corporation



Emergo Europe B.V.
Prinsessegracht 20
2514 AP The Hague
The Netherlands
Tel: +31 70 345 8570