

## Keratin 14 (Clone LL002)

### Mouse Monoclonal Antibody

**Specificity:** Human and Rat. Others-not known

**Immunogen:** A synthetic peptide of 15 amino acid residues from the C-terminus of human keratin 14

**Ig Class:** Mouse IgG3

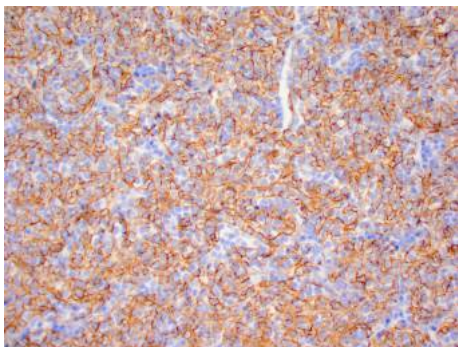
**Storage:** Store vial at 4°C. When stored at 2-8°C, this antibody is stable for 24 months

**Staining procedures:** Use formalin-fixed and paraffin-embedded sections. *Retrieval conditions:* Pretreatment of deparaffinized tissue with heat-induced epitope retrieval is recommended. *Detection methods:* Polymer anti-mouse/rabbit Ig detection system. *Working dilution:* 1:100-300; *Positive Control:* Skin, tonsil or squamous cell carcinoma. *Cellular Localization:* Cytoplasmic. *Intended Use:* In vitro diagnosis (IVD).

**Description:** Keratin 14 belongs to the type A (acidic) subfamily of low molecular weight keratins and exists in combination with keratin 5. Keratin 14 has been studied as a prognostic marker in breast cancer.

**Comments:** LL002 distinguishes stratified epithelial cells from simple epithelial cells and has been reported useful in the identification of squamous cell carcinomas.

**Supplied As:** Purified antibody with 0.2% BSA and 15mM sodium azide.

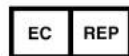
**References:**

1. Moll R, et al. *Histochem Cell Biol.* 2008; 129:705-33.
2. Chu PG, et al. *Histopathology.* 2001; 39:9-16.

*Formalin-fixed, paraffin-embedded human thymoma stained with Keratin 14 using peroxidase-conjugate and DAB chromogen. Note the cytoplasmic staining of squamous cells*

**Cat. #Z2042 (1.0 ml)**

**ZETA** Corporation  
65 N 1<sup>st</sup> Ave, Ste 202C  
Arcadia, CA 91006, USA  
Tel: (626) 355-2053  
<http://www.zeta-corp.com>



Zeta Corporation

**Emergo Europe B.V.**  
Prinsessegracht 20  
2514 AP The Hague  
The Netherlands  
Tel: +31 70 345 8570