

Cyclin E (Clone ZM121)

Mouse Monoclonal Antibody

Specificity: Human, Mouse, Rat. Others not tested

Immunogen: Recombinant human Cyclin E (CCNE1) protein fragment (around aa 10-176)

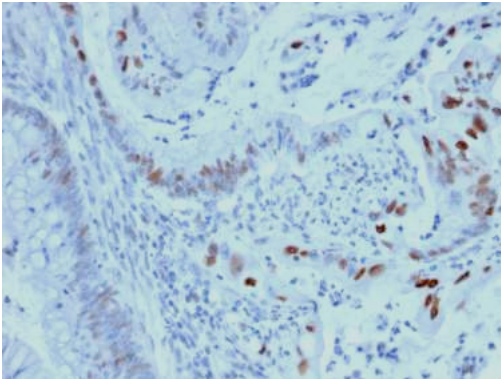
Ig Class: IgG/κ

Storage: Store vial at 4°C. When stored at 2-8°C, this antibody is stable for 24 months

Staining procedures: Use formalin-fixed and paraffin-embedded sections. *Retrieval conditions:* Pretreatment of deparaffinized tissue with heat-induced epitope retrieval is recommended. *Detection methods:* Polymer anti-mouse/rabbit Ig detection system. *Working dilution:* 1:100-200; *Positive Control:* Colon carcinoma.. *Cellular Localization:* Nuclear. *Intended Use:* In vitro diagnosis (IVD).

Description: Cyclin E belongs to the highly conserved cyclin family, whose members exhibit distinct expression and degradation patterns which contribute to the temporal coordination of each mitotic event. Cyclins function as regulators of CDK kinases. Cyclin E forms a complex with and functions as a regulatory subunit of CDK2, whose activity is required for cell cycle G1/S transition. Cyclin E accumulates at the G1-S phase boundary and is degraded as cells progress through S phase. Cyclin E overexpression has been observed in many tumors, which results in chromosome instability, and thus may contribute to tumorigenesis.

Supplied As: Purified antibody with 0.2% BSA and 15mM sodium azide.

**References:**

1. Mao TL, et al. *Am J Surg Pathol.* 2006; 30:1105-10.
2. Camacho FI, et al. *Am J Surg Pathol.* 2003; 27:762-71.
3. Keating JT, et al. *Am J Surg Pathol.* 2001; 25:884-91.

Formalin-fixed, paraffin-embedded human colon carcinoma stained with anti-Cyclin E antibody using peroxidase-conjugate and DAB chromogen. Note the nuclear staining of tumor cells

Cat. #Z2431 (1.0 ml)

ZETA Corporation
65 N 1st Ave, Ste 202C
Arcadia, CA 91006, USA
Tel: (626) 355-2053
<http://www.zeta-corp.com>



Zeta Corporation

Emergo Europe B.V.
Prinsessegracht 20
2514 AP The Hague
The Netherlands
Tel: +31 70 345 8570