

# Calretinin (SP13)

## Rabbit Monoclonal Antibody

**Specificity:** Human, Mouse, and Rat. Others not tested

**Immunogen:** Recombinant full length mouse calretinin protein

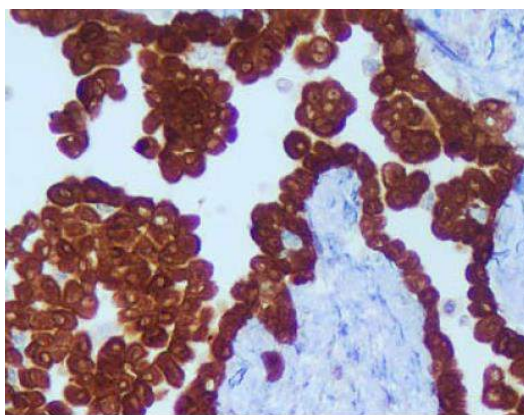
**Ig Class:** Rabbit IgG

**Storage:** Store vial at 4°C. When stored at 2-8°C, this antibody is stable for 24 months.

**Staining procedures:** Use formalin-fixed and paraffin-embedded sections. *Retrieval conditions:* Pretreatment of deparaffinized tissue with heat-induced epitope retrieval is recommended. *Detection methods:* Polymer anti-mouse/rabbit Ig detection system. *Working dilution:* 1:50; *Positive Control:* Mesothelioma; *Cellular Localization:* Cytoplasmic and nuclear; *Intended Use:* In Vitro Diagnosis (IVD).

**Description:** Calretinin is an intracellular calcium-binding protein belonging to the troponin C superfamily characterized by a structural motif described as the EF-hand domain. The immunohistochemical detection of calretinin in developing cerebellum is restricted to the later stages indicated by weak staining from week 21 of gestation, in Purkinje and basket cells and in neurons of the dentate nucleus. The intensity of staining increases as the cerebellum matures. In tumors, calretinin has been detected in mesotheliomas and some pulmonary adenocarcinomas.

**Supplied As:** Tissue culture supernatant in 0.2% BSA and 15mM sodium azide.



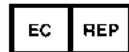
*Formalin-fixed, paraffin-embedded human mesothelioma stained with anti-calretinin antibody using peroxidase-conjugate and DAB chromogen. Note cytoplasmic staining of mesothelioma cells*

**Cat. #Z2026 (1.0 ml)**

**ZETA** Corporation  
65 N 1<sup>st</sup> Ave, Ste 202C  
Arcadia, CA 91006, USA  
Tel: (626) 355-2053  
<http://www.zeta-corp.com>



Zeta Corporation



**Emergo Europe B.V.**  
Prinsessegracht 20  
2514 AP The Hague  
The Netherlands  
Tel: +31 70 345 8570