

## Calponin-1 (Clone EP798Y) Rabbit Monoclonal Antibody

**Specificity:** Human and Rat. Others not tested

**Immunogen:** A synthetic peptide corresponding to residues near the C-term of human calponin-1

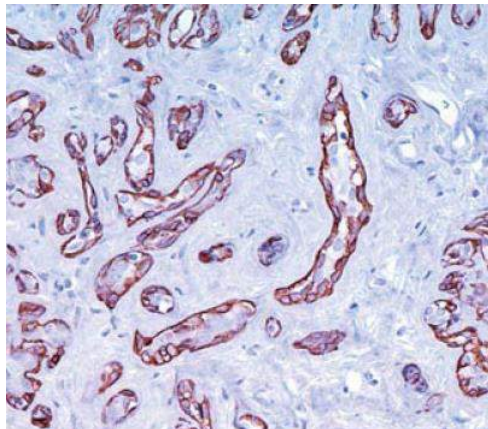
**Ig Class:** Rabbit IgG

**Storage:** Store vial at 4°C. When stored at 2-8°C, this antibody is stable for 24 months

**Staining procedures:** Use formalin-fixed and paraffin-embedded sections. *Retrieval conditions:* Pretreatment of deparaffinized tissue with heat-induced epitope retrieval is recommended. *Detection methods:* Polymer anti-mouse/rabbit Ig detection system. *Working dilution:* 1:50-200; *Positive Control:* Normal breast tissue; *Cellular Localization:* Cytoplasmic; *Intended Use:* In vitro Diagnosis (IVD).

**Description:** Calponin-1, a calmodulin, binds tropomyosin and F-actin and is thought to be involved in the regulation of smooth muscle contraction. The expression of calponin-1 is restricted to smooth muscle cells and is a marker of the differentiated contractile phenotype of developing smooth muscle. Two isoforms of calponin-1 exist whose molecular weights are 34kDa and 29kDa. Expression of the 29kDa form is primarily restricted to muscle of the urogenital tract. The expression of calponin-1 has also been demonstrated in myoepithelial cells from benign and malignant breast lesions.

**Supplied As:** Purified antibody with 0.2% BSA and 15mM sodium azide.



Formalin-fixed, paraffin-embedded human benign breast tissue stained with anti-calponin-1 antibody using peroxidase-conjugate and DAB chromogen. Note cytoplasmic staining of myoepithelial cells

Cat. #Z2122 (1.0 ml)

ZETA Corporation  
65 N 1<sup>st</sup> Ave, Ste 202C  
Arcadia, CA 91006, USA  
Tel: (626) 355-2053  
<http://www.zeta-corp.com>



Zeta Corporation



**Emergo Europe B.V.**  
Prinsessegracht 20  
2514 AP The Hague  
The Netherlands  
Tel: +31 70 345 8570