

---

## Caldesmon (EP19, as same as E89) Rabbit Monoclonal Antibodies

**Specificity:** Human. Others unknown

**Immunogen:** A synthetic phospho-peptide corresponding to residues surrounding Ser789 of human caldesmon

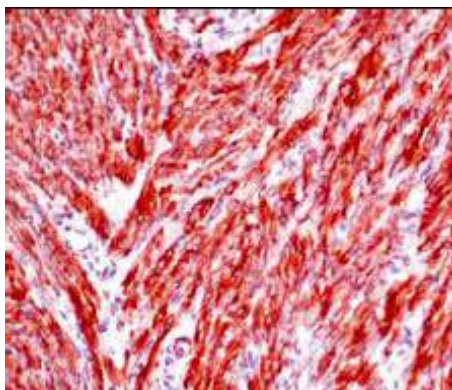
**Ig Class:** Rabbit IgG

**Storage:** Store vial at 4°C. When stored at 2-8°C, this antibody is stable for 24 months

**Staining procedures:** Use formalin-fixed and paraffin-embedded sections. *Retrieval conditions:* Pretreatment of deparaffinized tissue with heat-induced epitope retrieval is recommended. *Detection methods:* Polymer anti-mouse/rabbit Ig detection system. *Working dilution:* 1:50-100. *Positive Control:* Uterus, colon carcinoma. *Cellular Localization:* Cytoplasmic. *Intended Use:* In vitro Diagnosis (IVD).

**Description:** Caldesmon is a developmentally regulated protein involved in smooth muscle and non-muscle contraction. Two closely related variants of human caldesmon have been identified which differ in their electrophoretic mobility and cellular distribution. The *h*-caldesmon variant (120-150kDa) is predominantly expressed in smooth muscle whereas *l*-caldesmon (70-80kDa) is found in non-muscle tissue and cells. Neither of the two variants has been detected in skeletal muscle.

**Supplied As:** Purified antibody with 0.2% BSA and 15mM sodium azide.



*Formalin-fixed, paraffin-embedded human uterus stained with anti-caldesmon antibody using peroxidase-conjugate and AEC chromogen. Note cytoplasmic staining of smooth muscle cells*

**Cat. #Z2142 (1.0 ml)**

---

**ZETA** Corporation  
65 N 1<sup>st</sup> Ave, Ste 202C  
Arcadia, CA 91006, USA  
Tel: (626) 355-2053  
<http://www.zeta-corp.com>



Zeta Corporation



**Emergo Europe B.V.**  
Prinsessegracht 20  
2514 AP The Hague  
The Netherlands  
Tel: +31 70 345 8570