

---

# Cadherin 17 (CDH17) (Clone SP183)

## Rabbit Monoclonal Antibody

**Specificity:** Human. Does not react with mouse and rat. Others-not known

**Immunogen:** Synthetic peptide derived from the C-terminus of human cadherin 17 protein

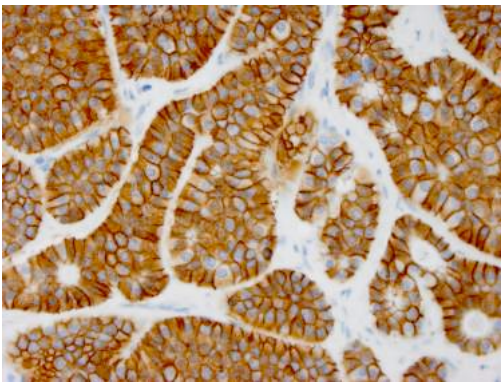
**Ig Class:** Rabbit IgG

**Storage:** Store vial at 4°C. When stored at 2-8°C, this antibody is stable for 24 months

**Staining procedures:** Use formalin-fixed and paraffin-embedded sections. *Retrieval conditions:* Pretreatment of deparaffinized tissue with heat-induced epitope retrieval is recommended. *Detection methods:* Polymer anti-mouse/rabbit Ig detection system. *Working dilution:* 1:50; *Positive Control:* Colon adenocarcinoma. *Cellular Localization:* Cytoplasmic and membranous. *Intended Use:* In vitro diagnosis (IVD).

**Description:** Cadherin-17 (CDH17) is a calcium-dependent, membrane-associated glycoprotein. It is consisted of an extracellular region with 7 cadherin domains and a transmembrane region but lacking the conserved cytoplasmic domain. The protein mainly distributes in the gastrointestinal tract and pancreatic ducts. The protein is up-regulated in various carcinomas of the digestive system.

**Supplied As:** Purified antibody with 0.2% BSA and 15mM sodium azide.

**References:**

1. Su MC, et al. *Mod Pathol.* 2008; 21:1379-86.
2. Gessner R, et al. *Ann N Y Acad Sci.* 2000; 915:136-43.

*Formalin-fixed, paraffin-embedded colon neuroendocrine tumor stained with anti-cadherin 17 antibody using peroxidase-conjugate and DAB chromogen. Note membrane staining of tumor cells*

Cat. #Z2286 (1.0 ml)

---

**ZETA** Corporation  
65 N 1<sup>st</sup> Ave, Ste 202C  
Arcadia, CA 91006, USA  
Tel: (626) 355-2053  
<http://www.zeta-corp.com>



Zeta Corporation



**Emergo Europe B.V.**  
Prinsessegracht 20  
2514 AP The Hague  
The Netherlands  
Tel: +31 70 345 8570