
Cadherin 17 (CDH17) (Clone SP183)

Rabbit Monoclonal Antibody

Specificity: Human. Does not react with mouse and rat. Others-not known

Immunogen: Synthetic peptide derived from the C-terminus of human cadherin 17 protein

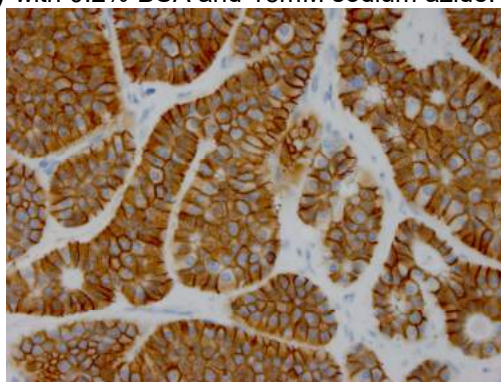
Ig Class: Rabbit IgG

Storage: Store vial at 4°C. When stored at 2-8°C, this antibody is stable for 24 months

Staining procedures: Use formalin-fixed and paraffin-embedded sections. *Retrieval conditions:* Pretreatment of deparaffinized tissue with heat-induced epitope retrieval is recommended. *Detection methods:* Polymer anti-mouse/rabbit Ig detection system. *Working dilution:* 1:50; *Positive Control:* Colon adenocarcinoma. *Cellular Localization:* Cytoplasmic and membranous. *Intended Use:* In vitro diagnosis (IVD).

Description: Cadherin-17 (CDH17) is a calcium-dependent, membrane-associated glycoprotein. It is consisted of an extracellular region with 7 cadherin domains and a transmembrane region but lacking the conserved cytoplasmic domain. The protein mainly distributes in the gastrointestinal tract and pancreatic ducts. The protein is up-regulated in various carcinomas of the digestive system.

Supplied As: Purified antibody with 0.2% BSA and 15mM sodium azide.



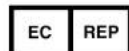
Formalin-fixed, paraffin-embedded colon neuroendocrine tumor stained with anti-cadherin 17 antibody using peroxidase-conjugate and DAB chromogen. Note membrane staining of tumor cells

Cat. #Z2286 (1.0 ml)

ZETA Corporation
65 N 1st Ave, Ste 202C
Arcadia, CA 91006, USA
Tel: (626) 355-2053
<http://www.zeta-corp.com>



Zeta Corporation



Emergo Europe B.V.
Prinsessegracht 20
2514 AP The Hague
The Netherlands
Tel: +31 70 345 8570