
COX2 (Clone SP21)

Rabbit Monoclonal Antibody

Species Reactivity: Human, Mouse, Rat. Others not tested

Immunogen: A synthetic peptide from C-terminus of rat COX2

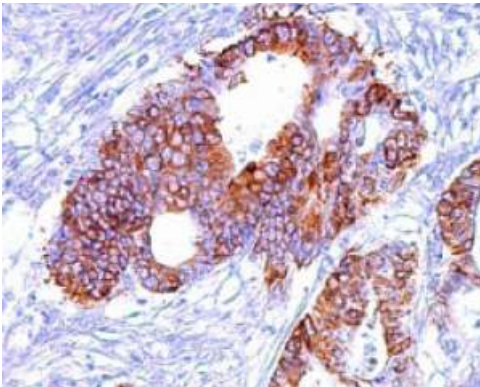
Ig Class: Rabbit IgG

Storage: Store vial at 4°C. When stored at 2-8°C, this antibody is stable for 24 months

Staining procedures: Use formalin-fixed and paraffin-embedded sections. *Retrieval conditions:* Pretreatment of deparaffinized tissue with heat-induced epitope retrieval is recommended. *Detection methods:* Polymer anti-mouse/rabbit Ig detection system. *Working dilution:* 1:50; *Positive Control:* Lung and colon carcinomas. *Cellular Localization:* Cytoplasmic and membrane. *Intended Use:* In vitro diagnosis (IVD).

Description: COX2 (Cyclooxygenase-2) is an inducible enzyme. It is involved in the response of cells to growth factors, tumor promoters, and cytokines that induce its expression. Given its role in synthesizing prostaglandins, COX2 is therefore of interest in studying immune response regulation. COX2 is induced by a wide variety of stimuli and was initially identified as immediate-early growth response gene. In addition, COX2 expression markedly increased in 85-90% of human colorectal adenocarcinomas whereas COX1 levels remain unchanged.

Supplied As: Purified antibody with 0.2% BSA and 15mM sodium azide.

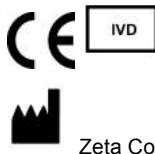
**References:**

1. Stoehlmacker J, et al. *Semin Oncol.* 2003; 30:10-6.
2. Sano H, et al. *Cancer Res.* 1995; 55:3785-9.

Formalin-fixed, paraffin-embedded colon carcinoma stained with anti- COX2 antibody using peroxidase conjugate and DAB chromogen. Note cytoplasmic staining of tumor cells

Cat #: Z2156 (1.0 ml)

ZETA Corporation
65 N 1st Ave, Ste 202C
Arcadia, CA 91006, USA
Tel: (626) 355-2053
<http://www.zeta-corp.com>



Zeta Corporation



Emergo Europe B.V.
Prinsessegracht 20
2514 AP The Hague
The Netherlands
Tel: +31 70 345 8570