

---

# COX2 (Clone SP21)

## Rabbit Monoclonal Antibody

**Species Reactivity:** Human, Mouse, Rat. Others not tested

**Immunogen:** A synthetic peptide from C-terminus of rat COX2

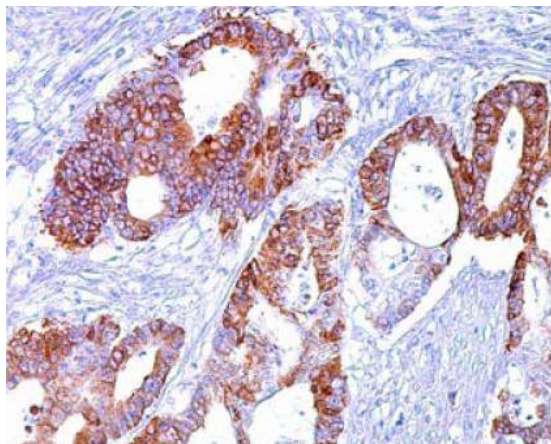
**Ig Class:** Rabbit IgG

**Storage:** Store vial at 4°C. When stored at 2-8°C, this antibody is stable for 24 months

**Staining procedures:** Use formalin-fixed and paraffin-embedded sections. *Retrieval conditions:* Pretreatment of deparaffinized tissue with heat-induced epitope retrieval is recommended. *Detection methods:* Polymer anti-mouse/rabbit Ig detection system. *Working dilution:* 1:50; *Positive Control:* Lung and colon carcinomas. *Cellular Localization:* Cytoplasmic and membrane. *Intended Use:* In vitro diagnosis (IVD).

**Description:** COX2 (Cyclooxygenase-2) is an inducible enzyme. It is involved in the response of cells to growth factors, tumor promoters, and cytokines that induce its expression. Given its role in synthesizing prostaglandins, COX2 is therefore of interest in studying immune response regulation. COX2 is induced by a wide variety of stimuli and was initially identified as immediate-early growth response gene. In addition, COX2 expression markedly increased in 85-90% of human colorectal adenocarcinomas whereas COX1 levels remain unchanged.

**Supplied As:** Purified antibody with 0.2% BSA and 15mM sodium azide.



*Formalin-fixed, paraffin-embedded colon carcinoma stained with anti- COX2 antibody using peroxidase conjugate and DAB chromogen. Note cytoplasmic staining of tumor cells*

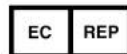
**Cat #: Z2156 (1.0 ml)**

---

**ZETA** Corporation  
65 N 1<sup>st</sup> Ave, Ste 202C  
Arcadia, CA 91006, USA  
Tel: (626) 355-2053  
<http://www.zeta-corp.com>



Zeta Corporation



**Emergo Europe B.V.**  
Prinsessegracht 20  
2514 AP The Hague  
The Netherlands  
Tel: +31 70 345 8570