

Cytomegalovirus (CMV) (Clone 8B1.2/1G5.2/2D4) Mouse Monoclonal Antibodies

Specificity: Human. Others-not known

Immunogen: Purified human CMV antigen

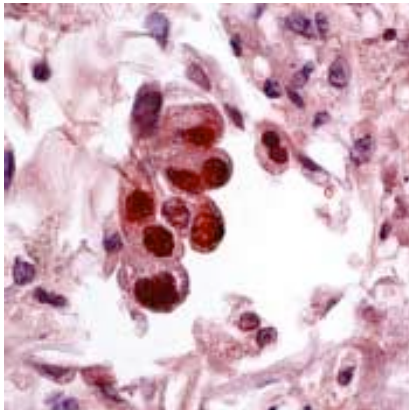
Ig Class: IgG2k/IgG1k

Storage: Store vial at 4°C. When stored at 2-8°C, this antibody is stable for 24 months

Staining procedures: Use formalin-fixed and paraffin-embedded sections. *Retrieval conditions:* Pretreatment of deparaffinized tissue with heat-induced epitope retrieval is recommended. *Detection methods:* Polymer anti-mouse/rabbit IgG detection system. *Working dilution:* 1:100-200; *Positive Control:* CMV infected tissue. *Cellular Localization:* Nuclear. *Intended Use:* Analyte Specific Reagent (ASR).

Description: Cytomegalovirus (CMV) is an opportunistic pathogen infecting lung, kidney, gut and other organs in situations where an individual is immunologically immature, such as the fetus and neonate. Infection also occurs in immunosuppressed patients, such as transplant patients, patients undergoing chemotherapy and those with HIV infection.

Supplied As: Purified antibody with 0.2% BSA and 15mM sodium azide.

**References:**

1. Mills AM, et al. *Am J Surg Pathol.* 2013; 37:995-1000.
2. Kandiel A, et al. *Am J Gastroenterol.* 2006; 101:2857-65.

Formalin-fixed, paraffin-embedded human CMV infected lung stained with anti-CMV antibody using peroxidase-conjugate and DAB chromogen. Note nuclear staining of infected alveolar cells

Cat. #Z2102 (1.0 ml)

ZETA Corporation
65 N 1st Ave, Ste 202C
Arcadia, CA 91006, USA
Tel: (626) 355-2053
<http://www.zeta-corp.com>



Zeta Corporation



Emergo Europe B.V.
Prinsessegracht 20
2514 AP The Hague
The Netherlands
Tel: +31 70 345 8570