
CEA

Rabbit Polyclonal Antibody

Specificity: Human. Others-unknown

Immunogen: Human colon carcinoma extract

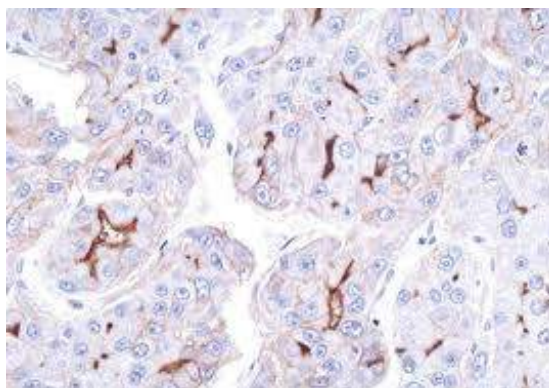
Ig Class: IgG

Storage: Store vial at 4°C. When stored at 2-8°C, this antibody is stable for 24 months

Staining procedures: Use formalin-fixed and paraffin-embedded sections. *Retrieval conditions:* Pretreatment of deparaffinized tissue with heat-induced epitope retrieval is recommended. *Detection methods:* Polymer anti-mouse/rabbit Ig detection system. *Working dilution:* 1:100-200; *Positive Control:* Colon carcinoma. *Cellular Localization:* Cytoplasmic and luminal membrane. *Intended Use:* In vitro diagnosis (IVD).

Description: Anti-CEA polyclonal antibody is used as a tool to assist in the distinction between adenocarcinoma and epithelioid malignant mesotheliomas. Another suggested use of anti-CEA is to immunophenotype various metastatic adenocarcinomas as a means of identifying their origin within a panel of different markers. Anti-CEA positivity is seen in adenocarcinomas from the lung, colon, stomach, esophagus, pancreas, gallbladder, urachus, salivary gland, ovary, and endocervix. Polyclonal anti-CEA is useful in staining hepatocellular carcinoma in a canalicular pattern.

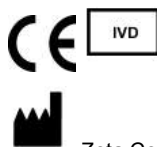
Supplied As: Purified antibody with 0.2% BSA and 15mM sodium azide.



Formalin-fixed, paraffin-embedded human hepatocellular carcinoma stained with anti-CEA polyclonal antibody using peroxidase-conjugate and DAB chromogen. Note the canalicular staining pattern of tumor cells

Cat. #Z2100P (1.0 ml)

ZETA Corporation
65 N 1st Ave, Ste 202C
Arcadia, CA 91006, USA
Tel: (626) 355-2053
<http://www.zeta-corp.com>



Zeta Corporation



Emergo Europe B.V.
Prinsessegracht 20
2514 AP The Hague
The Netherlands
Tel: +31 70 345 8570