

---

## CEA (Clone CEA31) Mouse Monoclonal Antibody

**Specificity:** Human. Others-unknown

**Immunogen:** Human colon carcinoma extract

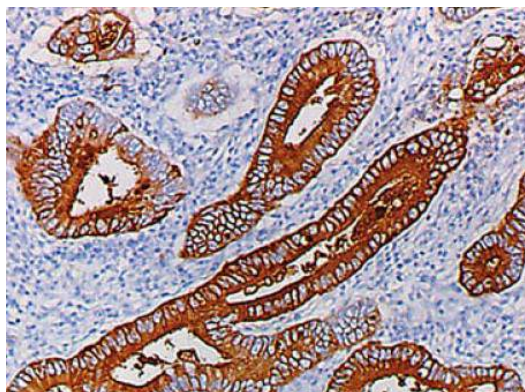
**Ig Class:** IgG1

**Storage:** Store vial at 4°C. When stored at 2-8°C, this antibody is stable for 24 months

**Staining procedures:** Use formalin-fixed and paraffin-embedded sections. *Retrieval conditions:* Pretreatment of deparaffinized tissue with heat-induced epitope retrieval is recommended. *Detection methods:* Polymer anti-mouse/rabbit Ig detection system. *Working dilution:* 1:100-200; *Positive Control:* Colon carcinoma. *Cellular Localization:* Cytoplasmic and luminal membrane. *Intended Use:* In vitro diagnosis (IVD).

**Description:** Clone CEA31 has a high affinity for CEA and shows no detectable reactivity to nonspecific cross-reacting antigen (NCA), biliary glycoprotein (BGP), and human polymorphonuclear leucocytes. Ab-3 shows no reaction with a variety of normal tissues. CEA is not found in benign glands, stroma, or malignant prostatic cells. Antibody to CEA is useful in detecting early foci of gastric carcinoma and in distinguishing pulmonary adenocarcinomas (60-70% are CEA+) from pleural mesotheliomas (rarely or weakly CEA+).

**Supplied As:** Purified antibody with 0.2% BSA and 15mM sodium azide.

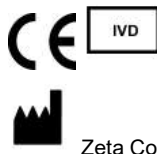


Formalin-fixed, paraffin-embedded human colon carcinoma stained with anti-CEA polyclonal antibody using peroxidase-conjugate and DAB chromogen. Note cytoplasmic and luminal surface staining of tumor cells

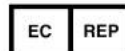
**Cat. #Z2100M (1.0 ml)**

---

**ZETA** Corporation  
65 N 1<sup>st</sup> Ave, Ste 202C  
Arcadia, CA 91006, USA  
Tel: (626) 355-2053  
<http://www.zeta-corp.com>



Zeta Corporation



**Emergo Europe B.V.**  
Prinsessegracht 20  
2514 AP The Hague  
The Netherlands  
Tel: +31 70 345 8570