

---

# CDX-2 (Clone EP25, as same as EPR2764Y)

## Rabbit Monoclonal Antibody

**Specificity:** Human. Others not known

**Immunogen:** synthetic peptide corresponding to residues near the N-terminus of human CDX-2

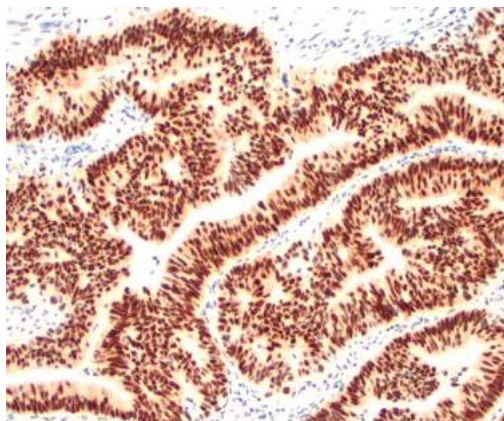
**Ig Class:** Rabbit IgG

**Storage:** Store vial at 4°C. When stored at 2-8°C, this antibody is stable for 24 months

**Staining procedures:** Use formalin-fixed and paraffin-embedded sections. *Retrieval conditions:* Pretreatment of deparaffinized tissue with heat-induced epitope retrieval is recommended. *Detection methods:* Polymer anti-mouse/rabbit Ig detection system. *Working dilution:* 1:50-100. *Positive Control:* Colon. *Cellular Localization:* Nuclear. *Intended Use:* In vitro diagnosis (IVD).

**Description:** CDX2, a member of the caudal-related homeobox family, is an intestine-specific transcription factor that regulates both proliferation and differentiation in intestinal epithelial cells. It plays an important role in triggering cells towards the phenotype of differentiated villus enterocytes as well as in the maintenance of the phenotype. An inverse correlation between the severity of dysplasia and the level of CDX2 expression has been reported. Over 95% of invasive colorectal carcinoma were also demonstrated to be positive for CDX-2 expression. CDX2 protein expression is restricted in both normal and neoplastic intestinal epithelial cells. Antibody CDX2 reacts with a conserved epitope of the 40KDa CDX2 protein localized in the nucleus. It exclusively marks nuclei of colonic epithelial cells and colorectal cancers on formalin-fixed, paraffin-embedded tissue sections.

**Supplied As:** Antibody purified from the culture supernatant in 0.2% BSA and 15mM sodium azide.



*Formalin-fixed, paraffin-embedded human colon adenocarcinoma stained with anti-CDX-2 antibody using peroxidase-conjugate and DAB chromogen. Note the nuclear staining of tumor cells*

**Cat. #Z2070 (1.0 ml)**

---

**ZETA** Corporation  
65 N 1<sup>st</sup> Ave, Ste 202C  
Arcadia, CA 91006, USA  
Tel: (626) 355-2053  
<http://www.zeta-corp.com>



Zeta Corporation



**Emergo Europe B.V.**  
Prinsessegracht 20  
2514 AP The Hague  
The Netherlands  
Tel: +31 70 345 8570