
CD8 (Clone SP16) Rabbit Monoclonal Antibody

Specificity: Human. Others not tested

Immunogen: Synthetic peptide corresponding to C-terminus of alpha chain of the human CD8 molecule

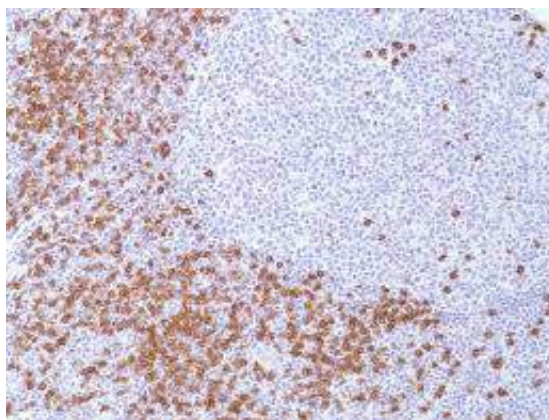
Ig Class: Rabbit IgG

Storage: Store vial at 4°C. When stored at 2-8 °C, this antibody is stable for 24 months

Staining procedures: Use formalin-fixed and paraffin-embedded sections. *Retrieval conditions:* Pretreatment of deparaffinized tissue with heat-induced epitope retrieval is recommended. *Detection methods:* Polymer anti-mouse/rabbit Ig detection system. *Working dilution:* 1:50. *Positive Control:* Tonsil. *Cellular Localization:* Membrane. *Intended Use:* In vitro Diagnosis (IVD).

Description: CD8 molecule consists of two chains, termed α and β chain, which are expressed as a disulphide-linked α/β heterodimer or as an α/α homodimer on T cell subset, thymocytes and NK cells. The majority of CD8+ T cells express CD8 as α/β heterodimer. CD8 functions as a coreceptor in concert with TCR for binding the MHC class I/peptide complex. The HIV-2 envelope glycoprotein binds CD8 α chain (but not β chain).

Supplied As: Tissue culture supernatant with 0.2% BSA and 15mM sodium azide.



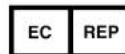
Formalin-fixed, paraffin-embedded human lymph node stained with anti-CD8 antibody using peroxidase-conjugate and DAB chromogen. Not the membrane staining of T-cells

Cat. #Z2045 (1.0 ml)

ZETA Corporation
65 N 1st Ave, Ste 202C
Arcadia, CA 91006, USA
Tel: (626) 355-2053
<http://www.zeta-corp.com>



Zeta Corporation



Emergo Europe B.V.
Prinsessegracht 20
2514 AP The Hague
The Netherlands
Tel: +31 70 345 8570