
CD8 (Clone C8/144B) Mouse Monoclonal Antibody

Specificity: Human. Others not tested

Immunogen: Synthetic peptide sequence comprising the 13 C-terminal amino acids of the cytoplasmic domain of alpha chain of the CD8 molecule

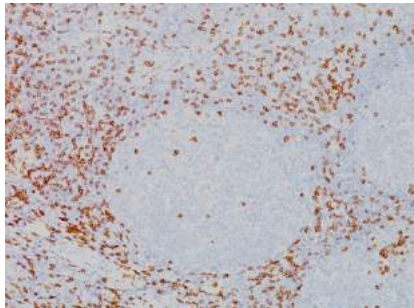
Ig Class: IgG2b/ κ

Storage: Store vial at 4°C. When stored at 2-8 °C, this antibody is stable for 24 months

Staining procedures: Use formalin-fixed and paraffin-embedded sections. *Retrieval conditions:* For formalin-fixed tissues, optimal results are obtained by pretreating tissues with heat-induced epitope retrieval using high pH target retrieval solution. *Detection methods:* Polymer anti-mouse/rabbit IgG detection system. *Working dilution:* 1:25-100; *Positive Control:* Lymph node. *Cellular Localization:* Membranous. *Intended Use:* In vitro diagnosis (IVD).

Description: CD8 molecule consists of two chains, termed α and β chain, which are expressed as a disulphide-linked α/β heterodimer or as an α/α homodimer on T cell subset, thymocytes and NK cells. The majority of CD8+ T cells express CD8 as α/β heterodimer. CD8 functions as a coreceptor in concert with TCR for binding the MHC class I/peptide complex. The HIV-2 envelope glycoprotein binds CD8 α chain (but not β chain).

Supplied As: Tissue culture supernatant with 0.2% BSA and 15mM sodium azide.



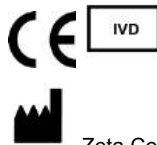
Formalin-fixed, paraffin-embedded human lymph node stained with anti-CD8 antibody using peroxidase-conjugate and DAB chromogen. Not the membrane staining of T-cells

References:

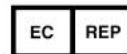
1. Gao GF, et al. *Immunol Today*. 2000; 21:630-6.
2. Bakels V, et al. *Am J Pathol*. 1997; 150:1941-9.
3. Chu PG, et al. *Am J Clin Pathol*. 2003; 120:64-70.

Cat. #Z2045M (1.0 ml)

ZETA Corporation
65 N 1st Ave, Ste 202C
Arcadia, CA 91006, USA
Tel: (626) 355-2053
<http://www.zeta-corp.com>



Zeta Corporation



Emergo Europe B.V.
Prinsessegracht 20
2514 AP The Hague
The Netherlands
Tel: +31 70 345 8570