
CD7 (Clone EP132)

Rabbit Monoclonal Antibody

Specificity: Human

Immunogen: CD7 of human origin

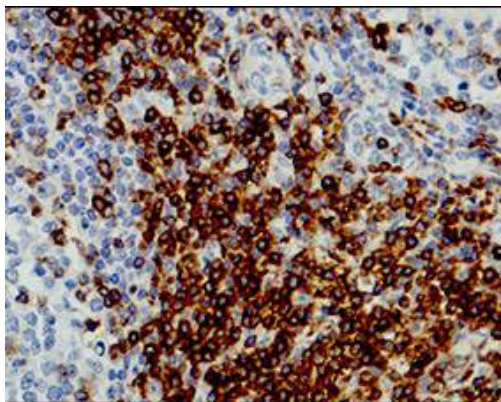
Ig Class: IgG

Storage: Store vial at 4°C. When stored at 2-8°C, this antibody is stable for 24 months

Staining procedures: Use formalin-fixed and paraffin-embedded sections. *Retrieval conditions:* Pretreatment of deparaffinized tissue with heat-induced epitope retrieval is recommended. *Detection methods:* Polymer anti-mouse/rabbit Ig detection system. *Working dilution:* 1:50-100. *Positive Control:* Tonsil or lymph node. *Cellular Localization:* Membrane. *Intended Use:* In Vitro Diagnosis (IVD).

Description: CD7 is a single-pass type 1 transmembrane protein that is a member of the immunoglobulin superfamily. It plays an essential role in T-cell interactions and also in T-cell/B-cell interactions during early lymphoid development. CD7 is expressed on thymocytes, T- and natural killer cells, and progenitors of lymphoid and myeloid cells. It is also expressed on T-cell Acute Lymphoblastic Leukemia/Lymphoma, Acute Myelogenous Leukemia and Chronic Myelogenous Leukemia. CD7 antibody is the most sensitive and specific T-cell deletion marker. Loss of CD7 expression by neoplastic lymphocytes is considered a distinguishing characteristic of mycosis fungoides (MF) and cutaneous T-cell lymphoma.

Supplied As: Purified antibody with 0.2% BSA and 15mM sodium azide.



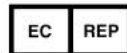
Formalin-fixed, paraffin-embedded human cecal mucosa stained with anti-CD7 antibody using peroxidase-conjugate and DAB chromogen. Note cell membrane staining of T-cells cells

Cat. #Z2309 (1.0 ml)

ZETA Corporation
65 N 1st Ave, Ste 202C
Arcadia, CA 91006, USA
Tel: (626) 355-2053
<http://www.zeta-corp.com>



Zeta Corporation



Emergo Europe B.V.
Prinsessegracht 20
2514 AP The Hague
The Netherlands
Tel: +31 70 345 8570