
CD68 (Clone ZM116) Mouse Monoclonal Antibody

Specificity: Human, monkey, cat, and rat. Does not react with pig, dog, and chicken

Immunogen: Recombinant human CD68 protein

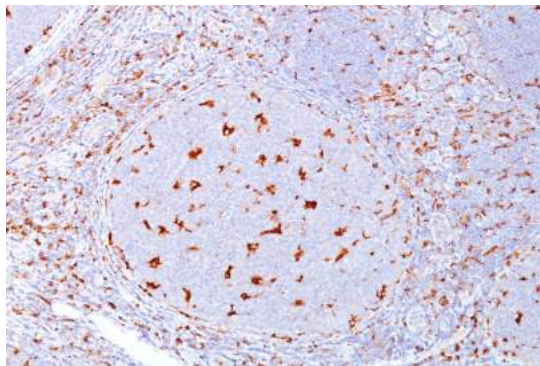
Ig Class: IgG₁ / κ

Storage: Store vial at 4°C. When stored at 2-8°C, this antibody is stable for 24 months

Staining procedures: Use formalin-fixed and paraffin-embedded sections. *Retrieval conditions:* Pretreatment of tissue with proteolytic enzymes should be performed prior to staining. *Detection methods:* Polymer anti-mouse/rabbit IgG detection system. *Working dilution:* 1:100-200. *Positive Control:* Tonsil, lymph node, spleen. *Cellular Localization:* Cytoplasmic. *Intended Use:* In vitro diagnosis (IVD).

Description: This antibody recognizes a glycoprotein of 110kDa, which is identified as CD68. It is important for identifying macrophages in tissue sections. It stains macrophages in a wide variety of human tissues, including Kupffer cells and macrophages in the red pulp of the spleen, in lamina propria of the gut, in lung alveoli, and in bone marrow. It reacts with myeloid precursors and peripheral blood granulocytes. It also reacts with plasmacytoid T cells, which are supposed to be of monocyte/macrophage origin. It shows strong granular cytoplasmic staining of chronic and acute myeloid leukemia and also reacts with rare cases of true histiocytic neoplasia. Lymphomas are negative or show few granules.

Supplied As: Purified antibody with 0.2% BSA and 15mM sodium azide.



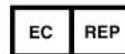
Formalin-fixed, paraffin-embedded human tonsil stained with anti-CD68 antibody using peroxidase conjugate and DAB chromogen. Note intense cytoplasmic staining of macrophages

Cat. #Z2426 (1.0 ml)

ZETA Corporation
65 N 1st Ave, Ste 202B
Arcadia, CA 91006, USA
Tel: (626) 355-2053
Fax: (626) 836-9149
<http://www.zeta-corp.com>



Zeta Corporation



ZETA Corporation
Dr. Fabio Bertolini
c/o G. Angelo, Esq.
via N. Riccio 15
91100 Trapani, Italy
Tel: +39 (0923) 29312