
CD68 (Clone KP1)

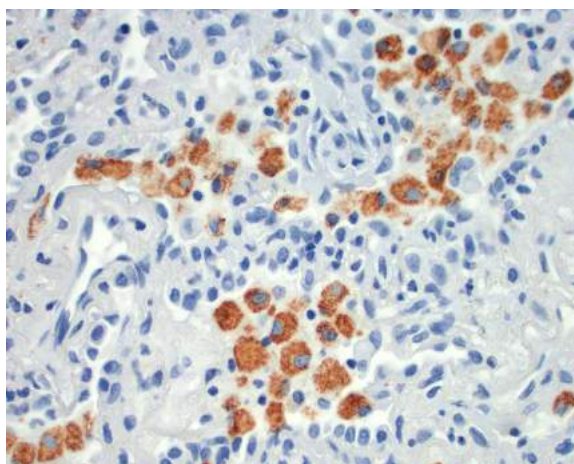
Mouse Monoclonal Antibody

| | |
|---------------------|--|
| Specificity: | Human, monkey, cat, and rat. Does not react with pig, dog, and chicken |
| Immunogen: | Subcellular fraction of human alveolar macrophages |
| Ig Class: | IgG ₁ / κ |
| Storage: | Store vial at 4°C. When stored at 2-8°C, this antibody is stable for 24 months |

Staining procedures: Use formalin-fixed and paraffin-embedded sections. *Retrieval conditions:* Pretreatment of tissue with proteolytic enzymes should be performed prior to staining. *Detection methods:* Polymer anti-mouse/rabbit IgG detection system. *Working dilution:* 1:100-200. *Positive Control:* Tonsil, lymph node, spleen. *Cellular Localization:* Cytoplasmic. *Intended Use:* In vitro diagnosis (IVD).

Description: CD68 is expressed on macrophages and monocytes. KP-1 is important for identifying macrophages in tissue sections. It stains macrophages in a wide variety of human tissues, including Kupffer cells and macrophages in the red pulp of the spleen, in lamina propria of the gut, in lung alveoli, and in bone marrow. KP-1 reacts with myeloid precursors and peripheral blood granulocytes. It also reacts with plasmacytoid T cells which are supposed to be of monocyte/macrophage origin. It shows strong granular cytoplasmic staining of chronic and acute myeloid leukemia and also reacts with rare cases of true histiocytic neoplasia. Tumors of lymphoid origin are usually not stained.

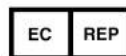
Supplied As: Purified antibody with 0.2% BSA and 15mM sodium azide.



Formalin-fixed, paraffin-embedded human granulation tissue stained with anti-CD68 antibody using peroxidase conjugate and DAB chromogen. Note intense cytoplasmic staining of macrophages

Cat. #Z2071 (1.0 ml)

ZETA Corporation
65 N 1st Ave, Ste 202B
Arcadia, CA 91006, USA
Tel: (626) 355-2053
Fax: (626) 836-9149
<http://www.zeta-corp.com>



ZETA Corporation
Dr. Fabio Bertolini
c/o G. Angelo, Esq.
via N. Riccio 15
91100 Trapani, Italy
Tel: +39 (0923) 29312